

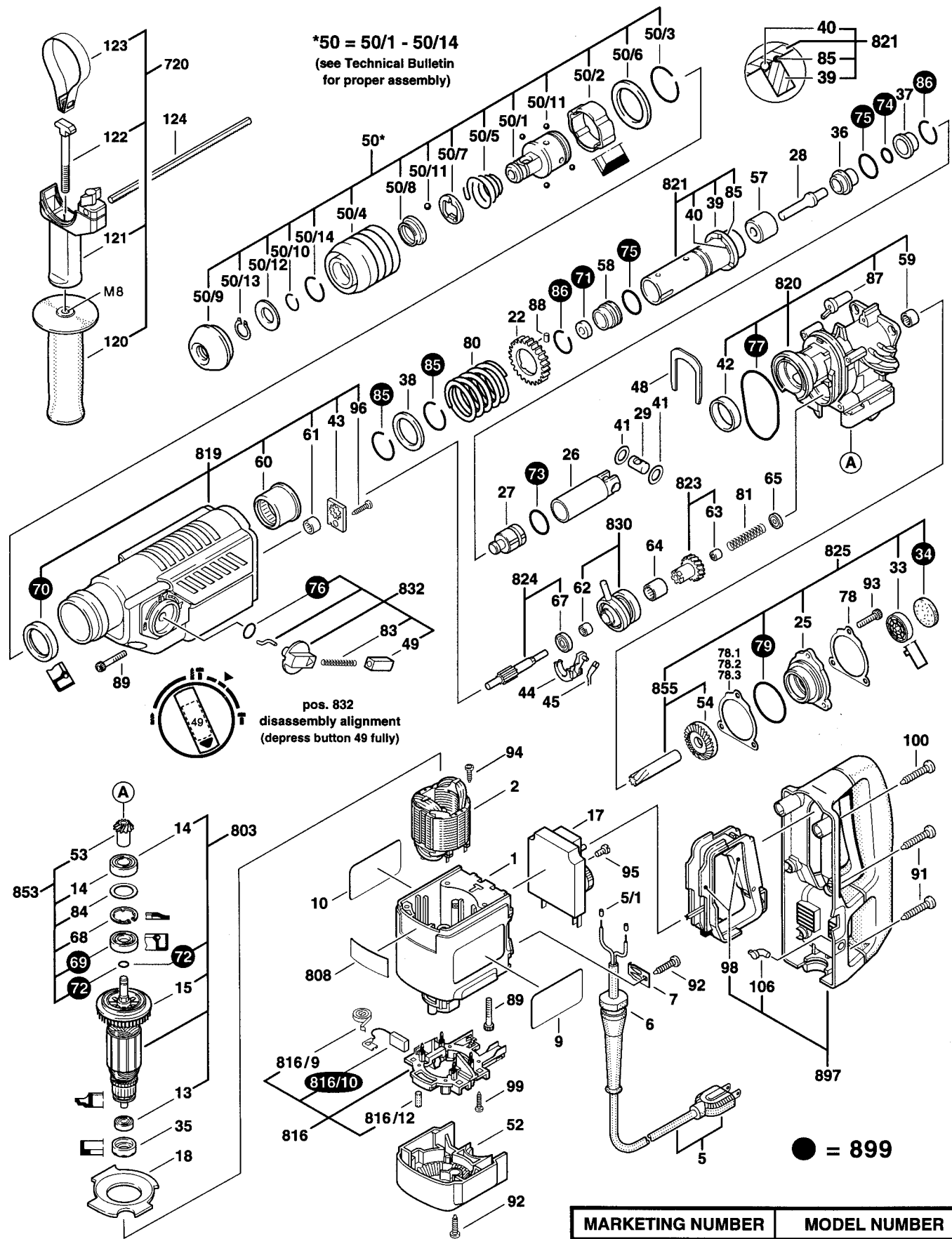


BOSCH 1-1/8" ROTARY HAMMER 11222EVS



DOUBLE INSULATED 115V

SERVICE PARTS LIST - JANUARY 1995



MARKETING NUMBER	MODEL NUMBER
11222EVS	06 11222 739

11222EVS 1-1/8" ROTARY HAMMER

S-B Power Tool Company 4300 W. Peterson Ave. Chicago, IL 60646-5999

Pos.	Qty	Part number	Description	F/C	Pos.	Qty	Part number	Description	F/C
1	1	1 615 108 059	Motor Housing	71	71	1	1 610 290 029	Scraper	49
2	1	1 614 220 111	Field 115V	22	72	1	1 900 210 100	O-Ring	78
5	1	1 604 460 092	Cord 115V 14/2	11	73	1	1 610 210 121	O-Ring	42
5/1	2	1 900 452 003	Terminal Sleeve	11	74	1	1 610 210 104	O-Ring	78
6	1	1 600 703 010	Strain Relief	11	75	2	1 610 210 105	O-Ring	78
7	1	1 601 302 018	Cord Clamp	89	76	1	1 610 210 046	O-Ring	78
9	1	2 610 906 840	Label "11222EVS"	9	77	1	1 610 210 106	Gasket	79
10	1	2 610 906 858	Label "Caution"	9	78	1	1 610 134 008	Plate 0.5mm	65
13	1	1 600 900 024	Ball Bearing	60	* 78.1	1	1 610 134 005	Shim 0.1mm	65
14	1	1 900 900 289	Ball Bearing	61	* 78.2	1	1 610 134 006	Shim 0.2mm	65
15	1	1 606 610 132	Fan	23	* 78.3	1	1 610 134 007	Shim 0.3mm	65
17	1	1 617 233 021	Speed Control 115V	17	79	1	2 600 210 003	O-Ring	78
18	1	1 610 591 011	Air Deflector	24	80	1	1 614 634 006	Clutch Spring	67
22	1	1 616 317 602	Gear	32	81	1	1 614 611 007	Spring	27
25	1	1 615 805 063	Bearing Flange	38	83	1	1 614 611 006	Spring	27
26	1	1 618 700 063	Piston	47	84	1	1 610 101 627	Washer	65
27	1	1 618 710 060	Striker	44	85	3	1 614 601 011	Spring Ring	89
28	1	1 613 124 043	Impact Bolt	45	86	2	1 614 601 012	Spring Ring	89
29	1	1 613 105 012	Wrist Pin	47	87	2	1 610 390 027	Threaded Bushing	82
33	1	1 610 190 016	Disc	65	88	3	1 613 200 007	Pin	66
34	1	1 610 005 000	Felt	77	89	8	2 910 141 168	Screw	89
35	1	1 610 206 021	Rubber Bearing Sleeve	82	91	4	2 910 211 036	Screw	89
36	1	1 610 390 016	Guide Bushing	49	92	3	2 912 401 019	Screw	89
37	1	1 610 390 032	Damping Bushing	49	93	3	2 910 151 164	Screw	89
38	1	1 610 102 026	Washer	67	94	2	2 603 435 015	Screw	89
39	1	1 610 190 022	Clutch Disc	67	95	2	2 910 091 082	Screw	89
40	3	1 613 100 019	Pin	66	96	1	2 912 401 418	Screw	89
41	2	1 610 101 011	Washer	47	98	1	1 612 026 050	Switch Handle	74
42	1	1 610 202 015	Bushing	51	99	2	2 910 611 405	Screw	89
43	1	1 611 098 005	Locking Plate	65	100	2	2 910 211 038	Screw	89
44	1	1 615 820 092	Shift Fork w/pos. 45	63	106	1	1 615 510 000	Light Conductor	9
45	1	1 614 651 014	Spring Clip	63	120	1	1 612 025 029	Auxiliary Handle	9
48	1	1 611 016 003	Holding Fork	62	121	1	1 618 040 054	Clamp Holder	80
49	1	1 612 026 025	Button 035	64	122	1	1 613 490 002	T-Bolt	80
50	1	1 618 598 175	Chuck w/pos. 50/1-50/14	91	123	1	1 611 316 009	Clamping Band 51mm	80
		see Technical Bulletin for proper assembly			124	1	1 613 001 008	Depth Gauge	9
50/1	1	1 618 598 174	Bit Housing	40	720	1	2 602 025 077	Auxiliary Handle Assy. w/pos. 120,121,122,123	9
50/2	1	1 616 409 014	Locking Sleeve	86	803	1	1 614 010 160	Armature w/Fan 115V w/pos. 13, 15, 14, 72	AW
50/3	1	1 614 601 016	Spring Ring	86	808	1	1 601 106 999	Nameplate	9
50/4	1	1 610 499 027	Protection Sleeve	92	816	1	1 614 336 023	Brush Holder Assembly w/pos. 816/9-816/12	25
50/5	1	1 614 643 008	Spring	86	816/9	2	1 614 652 002	Brush Spring	27
50/6	1	1 610 102 039	Washer	86	816/10	1	1 617 014 128	Brush Set	26
50/7	1	1 610 190 011	Holding Plate	86	816/12	2	1 613 212 004	Rubber Buffer	9
50/8	1	1 610 102 040	Thrust Ring	86	819	1	1 617 000 976	Gear Cover Assembly w/pos. 43,60,61,70,96	70
50/9	1	1 610 508 026	Dust Shield	86	820	1	1 617 000 977	Gear Housing Assembly w/pos. 42, 59, 77, 87	72
50/10	1	2 916 540 012	Spring Ring	86	821	1	1 617 000 978	Guide Tube Assembly w/pos. 39, 40, 85	43
50/11	5	1 903 230 013	Ball 7mm	86	823	1	1 616 328 044	Gear Assembly w/pos. 63	34
50/12	1	1 610 101 016	Washer	86	824	1	1 613 060 021	Pinion Gear w/pos. 67	54
50/13	1	2 916 650 009	Spring Ring	86	825	1	1 615 805 064	Bearing Flange Assembly w/pos. 25,33,34,79,855	38
50/14	1	1 614 601 023	Spring Ring	86	830	1	1 615 819 022	Eccentric Cam w/pos. 62	53
52	1	1 615 500 289	Motor Housing Cover	70	832	1	1 612 026 037	Selector Knob Assembly w/pos. 49, 76, 83	64
53	1	1 616 333 028	Bevel Gear	33	853	1	1 617 000 196	Bevel Gear Assembly w/pos. 14,53,68,69,72,84	33
54	1	1 616 333 029	Crown Gear	31	855	1	1 617 000 982	Crown Gear w/pos. 54	31
57	1	1 610 390 025	Stop Bushing	49	897	1	1 617 000 980	Handle Assembly w/pos. 98, 106	74
58	1	1 610 390 026	Guide Bushing	49	899	1	1 617 000 262	Service Pack w/Grease w/pos. 34,69-77,85,86,816/10	1
59	1	1 610 910 080	Needle Bearing	56					
60	1	1 610 910 073	Needle Bearing	51					
61	1	2 600 910 006	Needle Bearing	56					
62	1	1 610 910 074	Needle Bearing	56					
63	1	2 600 914 010	Needle Bearing	56					
64	1	1 610 913 010	Needle Bearing	56					
65	1	1 610 920 007	Ball Bearing	56					
67	1	1 610 905 016	Ball Bearing	56					
68	1	1 610 119 009	Retaining Ring	89					
69	1	1 610 283 024	Seal	77					
70	1	1 610 283 023	Seal	77					

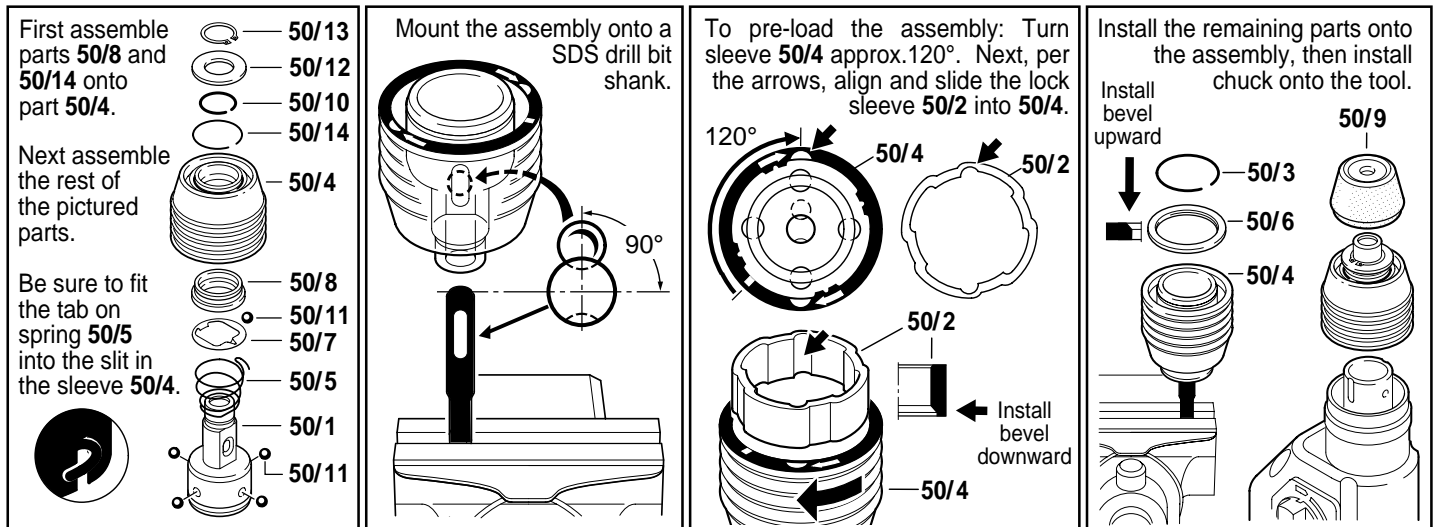
+ = Not Illustrated * = As Required F/C = Failure Code AW = Refer to AW Labor Time Chart

To: All Authorized and Factory Service Centers,
Field Sales and Internal Support Personnel

Re: Chuck Assembly Instructions for Rotary Hammers 11222EVS (06 11222 739)
 11222EVSG (06 11222 783)

Please insert this bulletin into the "Technical Bulletins" section of your Bosch Parts Manual, only after making any additions or notes to your Illustrated Parts List(s).

Following these instructions will assist your repair of the Chuck Assembly.



All questions should be directed to your Authorized Service Manager.

Gail D. Fred

Gail D. Fred
Product Service Department