

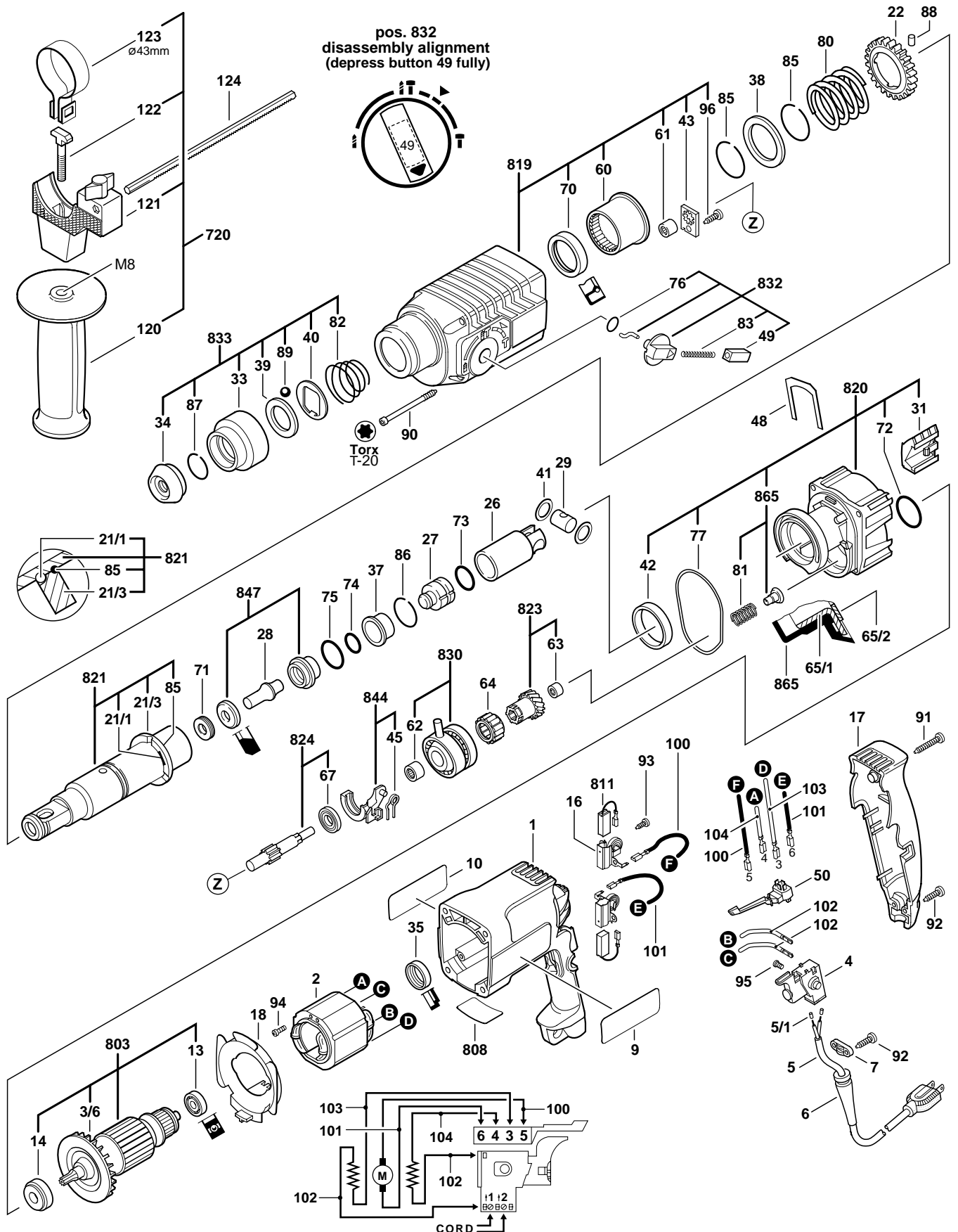
# BOSCH

January 1998  
INDUSTRIAL

## 7/8" ROTARY HAMMER

### Model 0611228739

# 11228VSR



# 11228VSR 7/8" ROTARY HAMMER

Pos.	Part Number	Description {Qty}	F/C	Pos.	Part Number	Description {Qty}	F/C
1	1 615 108 061	Motor Housing	71	77	1 610 210 106	Gasket	79
2	1 614 220 105	Field 120V	22	80	1 614 634 005	Clutch Spring	67
3/6	1 616 610 072	Fan	23	81	1 614 611 009	Spring	27
4	1 617 200 046	Switch VS	17	82	1 614 643 003	Spring	86
5	3 604 460 555	Cord 120V 18/2	11	83	1 614 611 006	Spring	27
5/1	1 900 452 012	Terminal Sleeve {2}	11	85	1 614 601 011	Spring Ring {3}	89
6	2 600 703 018	Strain Relief	11	86	1 614 601 012	Spring Ring	89
7	2 601 035 001	Cord Clamp	89	87	2 916 540 012	Spring Ring	86
9	2 610 906 838	Label "11228VSR"	9	88	1 613 200 007	Pin {3}	66
10	2 610 906 857	Label "Caution"	9	89	1 903 230 013	Ball 7mm	86
13	2 600 905 032	Ball Bearing	60	90	1 603 435 036	Screw {4}	89
14	1 610 905 006	Ball Bearing	61	91	2 910 611 082	Screw	89
16	1 614 336 025	Brush Holder w/Spring {2}	25	92	2 910 611 020	Screw {4}	89
17	1 615 132 054	Handle Cover	74	93	2 910 611 006	Screw {4}	89
18	1 610 522 009	Air Deflector	24	94	2 603 435 015	Screw {2}	89
21/1	1 613 100 019	Pin {3}	66	95	2 603 410 001	Screw {2}	89
21/3	1 610 190 022	Clutch Disc	67	96	2 910 611 018	Screw	89
22	1 616 317 602	Gear	32	100	2 604 448 104	Cable 60mm	10
26	1 618 700 062	Piston	47	101	1 614 448 034	Cable 45mm	10
27	1 618 710 057	Striker	44	102	2 604 448 005	Cable 130mm {2}	10
28	1 613 124 040	Impact Bolt	45	103	1 614 448 017	Cable 60mm	10
29	1 613 105 012	Wrist Pin	47	104	1 614 431 023	Cable 80mm	10
31	1 615 510 003	Protective Cover	9	120	1 612 025 019	Auxiliary Handle	9
33	1 610 499 012	Plastic Sleeve	92	121	1 618 040 048	Clamp Holder	80
34	1 610 508 008	Dust Shield	92	122	1 613 490 002	T-Bolt	80
35	1 610 206 021	Rubber Bearing Sleeve	82	123	1 611 316 006	Clamping Band 43mm	80
37	1 610 390 017	Damping Bushing	49	124	1 613 001 010	Depth Gauge	9
38	1 610 102 026	Washer	67	720	1 612 025 032	Auxiliary Handle Assy. w/pos. 120, 121, 122, 123	9
39	1 610 102 025	Thrust Ring	86	803	1 614 010 112	Armature w/Fan 120V w/pos. 3/6, 13, 14	AW
40	1 610 190 011	Holding Plate	86				
41	1 610 101 011	Washer {2}	47				
42	1 610 202 015	Bushing	51	808	1 611 104 999	Nameplate	9
43	1 611 098 005	Locking Plate	65	811	1 617 014 127	Brush Set	26
45	1 614 651 014	Spring Clip	63	819	1 615 806 093	Gear Cover Assembly w/pos. 43, 60, 61, 70, 96	70
48	1 611 016 003	Holding Fork	62				
49	1 612 026 035	Button	64	820	1 617 000 981	Gear Housing Assembly w/pos. 31, 42, 65/1, 65/2, 72, 77, 865	72
50	2 607 200 338	Reversing Switch	16				
60	1 610 910 073	Needle Bearing	51				
61	2 600 910 006	Needle Bearing	56	821	1 616 490 061	Guide Tube Assembly w/pos. 21/1, 21/3, 85	43
62	1 610 910 074	Needle Bearing	56				
63	2 600 914 010	Needle Bearing	56	823	1 616 328 042	Gear w/pos. 63	34
64	1 610 913 010	Needle Bearing	56	824	1 613 060 021	Pinion Gear w/pos. 67	54
65/1	1 610 590 007	Bushing	82	830	1 615 819 018	Eccentric Cam Assembly w/pos. 62	53
65/2	1 610 109 016	Gasket	79				
67	1 610 905 016	Ball Bearing	56	832	1 612 026 037	Selector Knob Assembly w/pos. 49, 76, 83	64
70	1 610 283 019	Seal	77				
71	1 610 290 029	Scraper	49	833	1 617 000 163	Bit Retaining Assembly w/pos. 33, 34, 39, 40, 82, 87, 89	86
72	1 610 210 068	O-Ring	78				
73	1 610 210 119	O-Ring	44				
74	1 610 210 104	O-Ring	78	844	1 615 820 092	Shift Fork w/pos. 45	63
75	1 610 210 105	O-Ring	78	847	1 617 000 348	Guide Bushing Assembly	49
76	1 610 210 046	O-Ring	78	865	1 610 591 016	Bushing Assy. w/pos. 81	82

## Service Notes: