

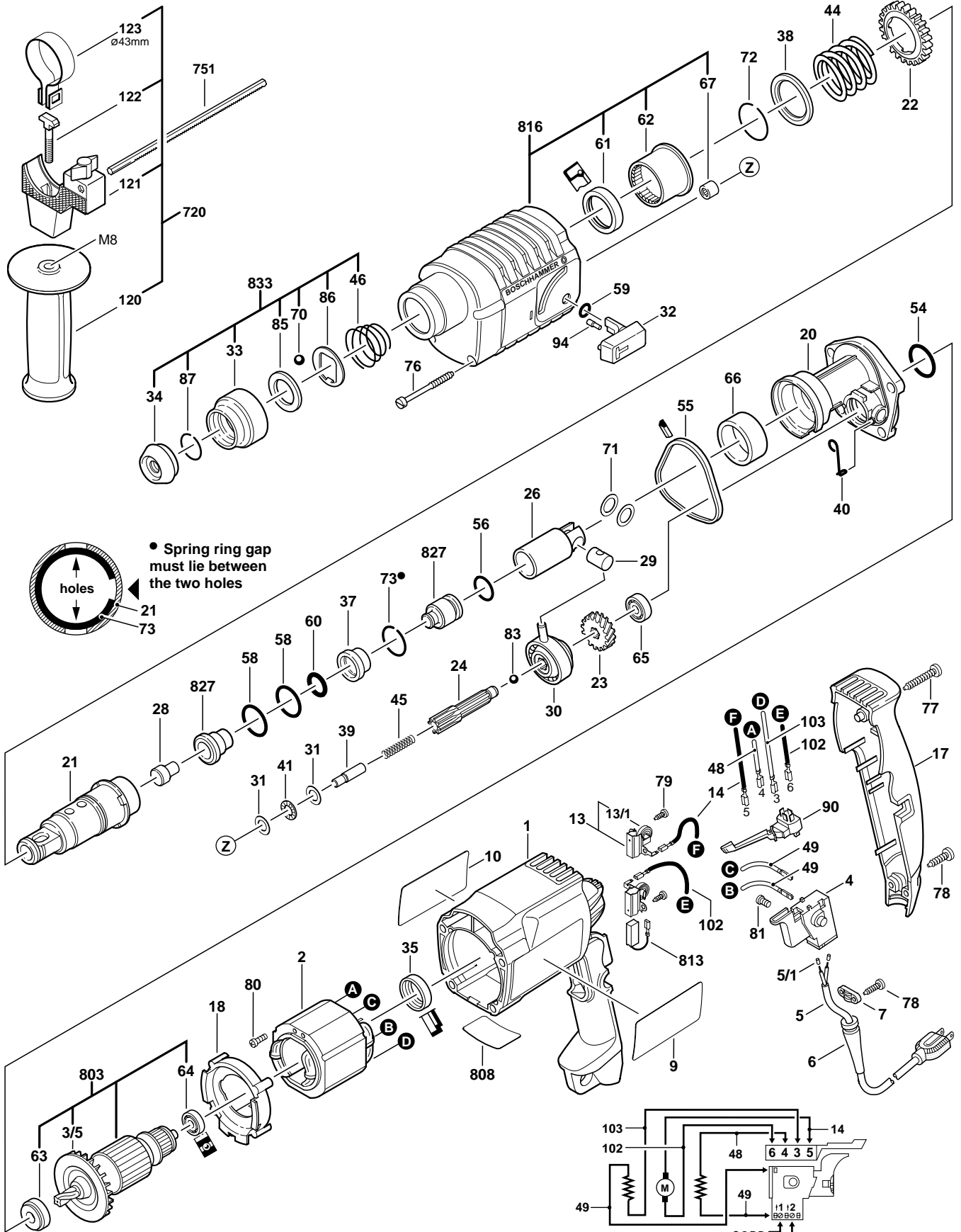
BOSCH

May 1997
INDUSTRIAL

ROTARY HAMMER

Model 0611234739

11234VSR



11234VSR ROTARY HAMMER

Pos.	Part Number	Description {Qty}	F/C	Pos.	Part Number	Description {Qty}	F/C
1	1 615 108 072	Motor Housing	71	60	1 610 210 073	O-Ring	78
2	2 604 220 428	Field 120V	22	61	1 610 283 017	Oil Seal	77
3/5	2 606 610 049	Fan	23	62	1 610 910 070	Needle Bearing	56
4	1 617 200 072	Switch VS 120V	17	63	1 610 905 006	Ball Bearing	61
5	3 604 460 555	Cord 120V 18/2	11	64	2 600 905 032	Ball Bearing	60
5/1	1 900 452 012	Terminal Sleeve {2}	11	65	1 600 905 011	Ball Bearing	61
6	2 600 703 018	Strain Relief	11	66	1 610 301 000	Spindle Bearing	51
7	2 601 035 001	Cord Clamp	89	67	2 600 914 010	Needle Bearing	56
9	2 610 991 955	Label "11234VSR"	9	70	1 903 230 013	Ball 7mm	86
10	2 610 991 956	Label "Warning"	9	71	1 610 101 011	Washer {2}	47
13	1 614 336 025	Brush Holder w/Spring {2}	25	72	2 916 540 018	Spring Ring	89
13/1	1 614 652 003	Brush Spring {2}	27	73	1 614 601 009	Spring Ring	89
14	2 604 448 104	Cable 60mm	10	76	1 613 435 009	Screw {4}	89
17	1 615 132 065	Handle Cover	74	77	2 910 611 082	Screw	89
18	1 610 522 008	Air Deflector	24	78	2 910 611 020	Screw {4}	89
20	1 615 700 021	Intermediate Plate	38	79	2 910 611 006	Screw {4}	89
21	1 616 490 058	Drill Holder	83	80	2 603 435 015	Screw {2}	89
22	1 616 320 007	Gear	32	81	2 603 410 001	Screw {2}	89
23	1 616 320 006	Gear	31	83	1 903 230 009	Ball 5mm	66
24	1 613 060 010	Pinion Shaft	54	85	1 610 102 025	Thrust Ring	86
26	1 618 700 052	Piston	47	86	1 610 190 011	Holding Plate	86
28	1 613 124 026	Impact Bolt	45	87	2 916 540 012	Spring Ring	86
29	1 613 105 012	Wrist Pin	47	90	2 607 200 338	Switch REV. 120V	16
30	1 615 819 005	Eccentric Cam	53	94	1 613 120 017	Pin	66
31	1 610 100 003	Thrust Washer {2}	65	102	1 614 448 034	Cable 45mm	10
32	1 612 026 023	Hammer Lever	64	103	1 614 448 017	Cable 60mm	10
33	1 610 499 012	Plastic Sleeve	92	120	1 612 025 019	Auxiliary Handle	9
34	1 610 508 008	Dust Shield	92	121	1 618 040 048	Clamp Holder Assembly	80
35	1 610 206 021	Rubber Bearing Sleeve	82	122	1 613 490 002	T-Bolt	80
37	1 610 390 011	Damping Bushing	49	123	1 611 316 006	Clamping Band 43mm	80
38	1 610 102 022	Washer	65	720	1 612 025 032	Auxiliary Handle Assy. w/pos. 120, 121, 122, 123	9
39	1 613 100 013	Pin	66	751	1 613 001 010	Depth Gauge	9
40	1 614 690 001	Lever Spring	64	803	1 614 010 041	Armature w/Fan 120V w/pos. 3/5, 63, 64	AW
41	1 610 920 003	Thrust Bearing	56	808	1 611 104 999	Nameplate	9
44	1 614 633 001	Clutch Spring	67	813	1 617 014 133	Brush Set 120V	26
45	1 614 614 001	Spring	27	816	1 615 806 077	Gear Housing Assembly w/pos. 61, 62, 67	72
46	1 614 643 003	Spring	86	827	1 617 000 338	Striker w/Guide Bushing	44
48	1 614 431 023	Cable 80mm	10	833	1 617 000 163	Bit Retainer Assembly w/pos. 33, 34, 46, 70, 85, 86, 87	86
49	2 604 448 005	Cable 130mm {2}	10				
54	1 610 210 068	O-Ring	78				
55	1 610 206 023	Gasket	79				
56	1 610 210 070	O-Ring	42				
58	1 610 210 058	O-Ring {2}	78				
59	1 610 210 069	O-Ring	78				

Service Notes:

Slipping point of clutch is minimum 14Nm (123 in lbs. / 10.3 ft lbs.)