

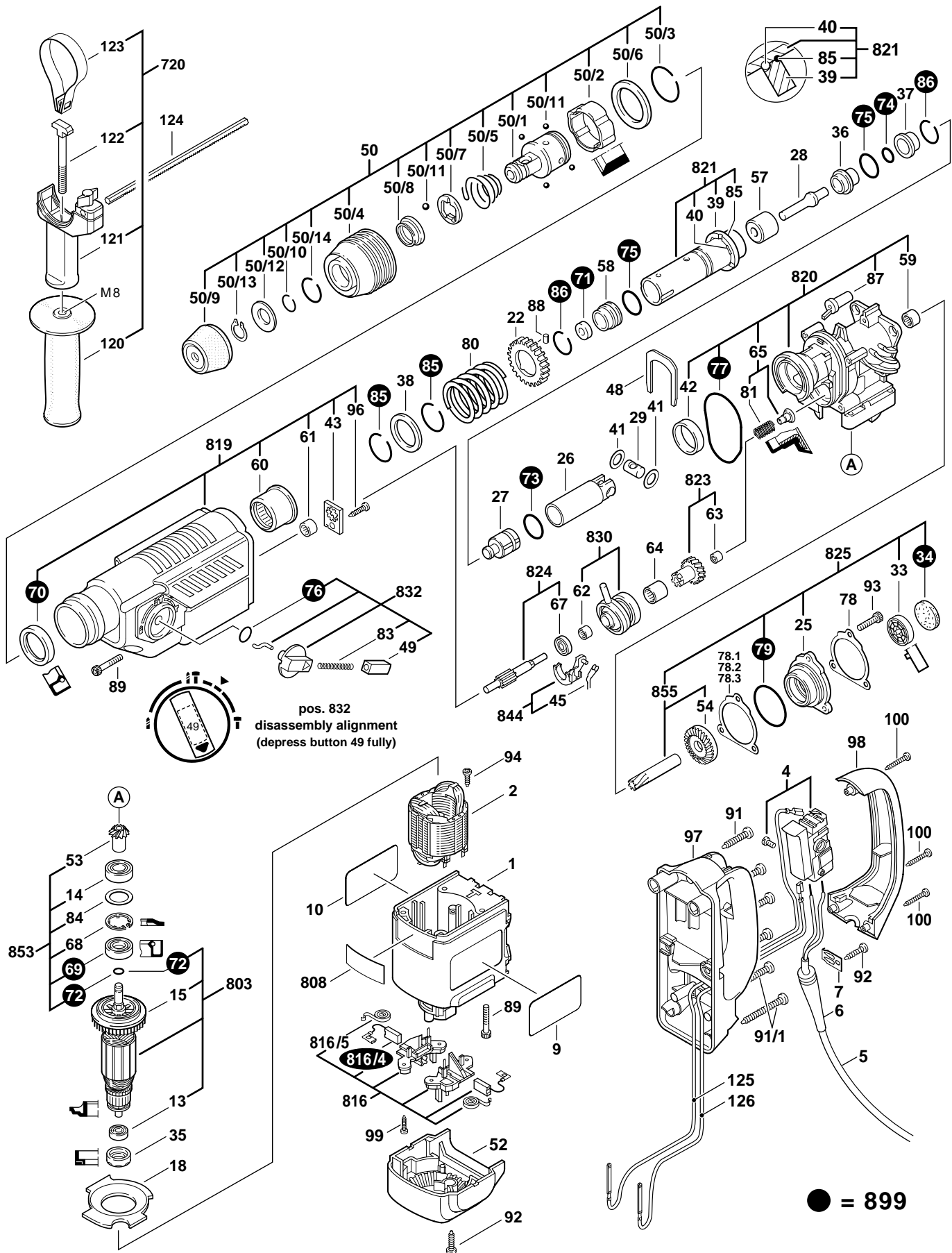
# BOSCH

July 1998  
INDUSTRIAL

## ROTARY HAMMER

Model 0611236739

# 11236VS



# 11236VS ROTARY HAMMER

Pos.	Part Number	Description {Qty.}	F/C	Pos.	Part Number	Description {Qty.}	F/C
1	1 615 108 059	Motor Housing	71	73	1 610 210 121	O-Ring	42
2	1 614 220 120	Field 120V	22	74	1 610 210 104	O-Ring	78
4	2 607 200 513	Switch On/Off 120V	17	75	1 610 210 105	O-Ring {2}	78
5	1 604 460 092	Cord 120V 14/2	11	76	1 610 210 046	O-Ring	78
6	1 610 703 054	Strain Relief	11	77	1 610 210 106	Gasket	79
7	1 601 302 018	Cord Clamp	89	78	1 610 134 008	Plate 0.5mm	65
9	2 610 994 195	Label "11236VS"	9	* 78.1	1 610 134 005	Shim 0.1mm	65
10	2 610 994 196	Label "Warning"	9	* 78.2	1 610 134 006	Shim 0.2mm	65
13	2 610 994 435	Ball Bearing	60	* 78.3	1 610 134 007	Shim 0.3mm	65
14	1 900 900 289	Ball Bearing	61	79	2 600 210 003	O-Ring	78
15	1 606 610 132	Fan	23	80	1 614 634 006	Clutch Spring	67
18	1 610 591 011	Air Deflector	24	81	1 614 611 009	Spring	27
22	1 616 317 602	Gear	32	83	1 614 611 006	Spring	27
25	1 615 805 063	Bearing Flange	38	84	1 610 101 627	Washer	65
26	1 618 700 063	Piston	47	85	1 614 601 011	Spring Ring {2}	89
27	1 618 710 060	Striker	44	86	1 614 601 012	Spring Ring {2}	89
28	1 613 124 043	Impact Bolt	45	87	1 610 390 027	Threaded Bushing {2}	82
29	1 613 105 012	Wrist Pin	47	88	1 613 200 007	Pin {3}	66
33	1 610 190 016	Disc	65	89	2 910 141 168	Screw {4}	89
34	1 610 005 000	Felt	77	91	2 910 211 036	Screw {4}	89
35	1 610 206 021	Rubber Bearing Sleeve	82	91/1	2 910 211 038	Screw {2}	89
36	1 610 390 016	Guide Bushing	49	92	2 912 401 019	Screw {3}	89
37	1 610 390 032	Damping Bushing	49	93	2 910 151 162	Screw {3}	89
38	1 610 102 026	Washer	67	94	2 603 435 015	Screw {2}	89
39	1 610 190 022	Clutch Disc	67	96	2 910 611 018	Screw	89
40	1 613 100 019	Pin {3}	66	97	1 615 133 031	Handle Cover	74
41	1 610 101 011	Washer {2}	47	98	1 615 133 030	Handle	74
42	1 610 202 015	Bushing	51	99	2 910 611 405	Screw	89
43	1 611 098 005	Locking Plate	65	100	2 914 211 311	Screw	89
45	1 614 651 014	Spring Clip	63	120	1 612 025 029	Auxiliary Handle	9
48	1 611 016 003	Holding Fork	62	121	1 618 040 054	Clamp Holder	80
49	1 612 026 035	Button	64	122	1 613 490 002	T-Bolt	80
50	1 618 598 175	Chuck w/pos. 50/1-50/14	91	123	1 611 316 009	Clamping Band 51mm	80
50/1	1 618 598 174	Bit Housing	40	124	1 613 001 008	Depth Gauge	9
50/2	1 616 409 014	Locking Sleeve	86	125	1 614 448 035	Cable	10
50/3	1 614 601 016	Spring Ring	86	126	1 614 480 036	Cable	10
50/4	1 610 499 027	Protection Sleeve	92	720	2 602 025 077	Auxiliary Handle Assembly w/pos. 120, 121, 122, 123	9
50/5	1 614 643 008	Spring	86	803	1 614 010 211	Armature w/Fan 120V w/pos. 13, 15, 72	AW
50/6	1 610 102 039	Washer	86	808	1 601 106 999	Nameplate	9
50/7	1 610 190 011	Holding Plate	86	816	1 617 000 356	Brush Holder Assembly w/pos. 816/4-816/5	25
50/8	1 610 102 040	Thrust Ring	86	816/4	1 617 014 128	Brush Set	26
50/9	1 610 508 026	Dust Shield	92	816/5	1 614 652 002	Brush Spring {2}	27
50/10	2 916 540 012	Spring Ring	86	819	1 617 000 345	Gear Cover Assembly w/pos. 43, 60, 61, 70, 96	70
50/11	1 903 230 013	Ball 7mm	86	820	1 617 000 315	Gear Housing Assembly w/pos. 42, 59, 65, 77, 87	72
50/12	1 610 101 016	Washer	86	821	1 617 000 978	Guide Tube Assembly w/pos. 39, 40, 85	43
50/13	2 916 650 009	Spring Ring	86	823	1 616 328 044	Gear Assembly w/pos. 63	34
50/14	1 614 601 023	Spring Ring	86	824	1 613 060 021	Pinion Gear w/pos. 67	54
52	1 615 500 298	Motor Housing Cover	70	825	1 615 805 064	Bearing Flange Assembly w/pos. 25, 33, 34, 79, 855	38
53	1 616 333 028	Bevel Gear	33	830	1 615 819 022	Eccentric Cam w/pos. 62	53
54	1 616 333 029	Crown Gear	31	832	1 612 026 037	Selector Knob Assembly w/pos. 49, 76, 83	64
57	1 610 390 025	Stop Bushing	49	844	1 615 820 092	Shift Fork w/pos. 45	63
58	1 610 390 026	Guide Bushing	49	853	1 617 000 196	Bevel Gear Assembly w/pos. 14, 53, 68, 69, 72, 84	33
59	1 610 910 080	Needle Bearing	56	855	1 617 000 982	Crown Gear w/pos. 54	31
60	1 610 910 073	Needle Bearing	51	899	1 617 000 262	Service Pack w/Grease w/pos. 34, 69-77, 79, 85, 86, 816/4	1
61	2 600 910 006	Needle Bearing	56				
62	1 610 910 074	Needle Bearing	56				
63	2 600 914 010	Needle Bearing	56				
64	1 610 913 010	Needle Bearing	56				
65	1 610 591 016	Ball Bearing	56				
67	1 610 905 016	Ball Bearing	56				
68	1 610 119 009	Retaining Ring	89				
69	1 610 283 024	Seal	77				
70	1 610 283 023	Seal	77				
71	1 610 290 029	Scraper	49				
72	1 900 210 100	O-Ring	78				

+ = Not Illustrated \* = As Required F/C = Failure Code AW = Refer to AW Labor Time Chart