

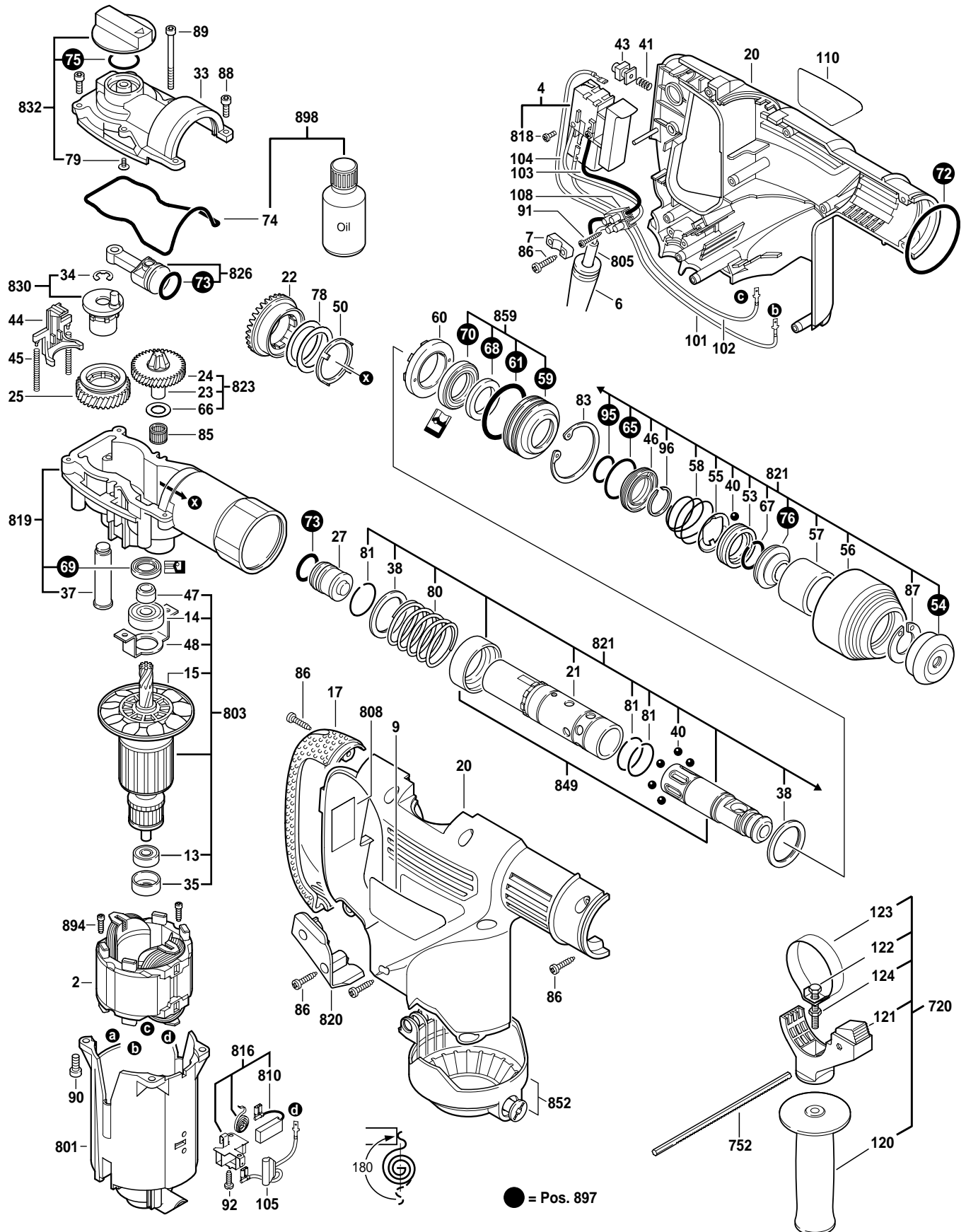
BOSCH

April 2001
INDUSTRIAL

ROTARY HAMMER

Model 0611239739

11239VS



11239VS ROTARY HAMMER

Pos.	Part Number	Description {Qty.}	F/C	Pos.	Part Number	Description {Qty.}	F/C
2	1 614 220 148	Field 120V	22	85	1 610 913 015	Needle Bearing	56
4	2 607 200 513	Switch VS w/pos. 818	17	86	1 603 435 050	Screw {13}	89
6	2 600 703 018	Strain Relief	11	87	1 610 209 006	Retainer	89
7	1 611 035 005	Cord Clamp	89	88	2 910 021 122	Screw {4}	89
9	1 611 110 A40	Label	9	89	2 910 141 142	Screw {2}	89
13	2 600 905 072	Ball Bearing	60	90	2 910 131 154	Screw {4}	89
14	1 610 905 026	Ball Bearing	61	91	2 912 401 008	Screw	89
15	1 616 610 088	Fan	23	92	2 910 611 405	Screw {4}	89
17	1 615 132 075	Grip	74	95	1 610 210 075	O-Ring	78
20	1 615 104 016	Housing	71	96	1 610 224 006	Retainer	89
21	1 615 806 047	Tube	43	101	1 614 449 012	Cable	10
22	1 616 333 038	Gear	32	102	1 614 431 028	Cable	10
23	1 616 333 039	Gear	33	103	1 614 437 017	Cable	10
24	1 616 312 001	Gear	31	104	3 604 460 038	Cable	10
25	1 616 317 061	Gear	34	105	1 614 449 013	Cable {2}	10
27	1 610 311 016	Striker	44	108	1 611 091 003	Terminal Block	10
33	1 615 808 082	Gear Housing Cover	70	110	1 611 110 A41	Label	9
34	2 916 080 910	Circlip	89	120	1 612 025 050	Auxiliary Handle	74
35	1 600 502 023	Rubber Bearing Sleeve	82	121	1 618 040 073	Support	9
37	1 613 123 004	Shaft	54	122	1 613 450 017	Screw	89
38	1 610 202 018	Washer {2}	65	123	1 611 316 018	Clamp	80
40	1 903 230 013	Ball 7mm {7}	66	124	2 915 051 180	Nut	89
41	3 604 618 008	Spring	27	720	2 602 025 112	Auxiliary Handle Assy. w/pos. 121, 122, 123, 124	74
43	1 610 390 043	Bushing	82				
44	1 611 329 019	Fork	62	752	1 613 001 010	Depth Rod	9
45	1 614 611 016	Spring {2}	27	801	1 615 108 103	Housing	70
46	1 610 290 071	Seal Ring	85	803	1 614 010 706	Armature w/Fan 120V w/pos. 13, 14, 15, 35, 47, 48	AW
47	1 610 250 010	Bushing	82				
48	1 611 329 020	Plate	62	805	3 604 460 555	Cord	11
50	1 610 290 059	Washer	65	808	1 611 104 999	Nameplate	9
53	1 610 422 012	Thrust Ring	65	810	1 617 014 139	Brush Set	26
54	1 610 508 039	Cap	92	816	1 617 000 397	Brush Holder Assembly w/pos. 810	25
55	1 610 190 040	Plate	62				
56	1 610 499 042	Sleeve	82	818	2 603 410 001	Screw {2}	89
57	1 610 516 015	Bushing	82	819	1 617 000 382	Gear Housing Assembly w/pos. 37, 50, 69	72
58	1 614 615 004	Spring	27				
59	1 610 314 003	Sleeve	82	820	1 615 104 018	Cover	70
60	1 615 190 087	Bearing	82	821	1 618 598 221	Tool Holder Assembly w/pos. 21,38,40,46,53-58, 65,67,76,80,81,87,95,96,849	91
61	1 610 210 156	O-Ring	78				
65	1 610 210 164	O-Ring	78				
66	1 610 100 612	Washer	65	823	1 617 016 009	Gear Assembly w/pos. 23, 24, 66	33
67	1 614 601 032	Retainer	89				
68	1 610 205 008	Felt Washer	77	826	1 618 700 073	Piston Assembly w/pos. 73	47
69	1 610 283 031	Seal	77				
70	1 610 283 032	Seal	77	830	1 612 210 118	Eccentric Assembly w/pos. 34	34
72	1 610 210 157	O-Ring	78				
73	1 610 210 121	O-Ring {2}	42	832	1 612 026 090	Selector Knob w/pos. 75, 79	63
74	1 611 014 002	Gasket	79				
75	1 610 210 155	O-Ring	78	849	1 618 598 220	Tool Holder	83
76	1 610 415 000	Seal	77	852	1 615 500 310	Brush Cover	64
* 78	1 610 102 051	Shim 0.3mm	65	859	1 610 314 004	Sleeve Assembly w/pos. 59, 61, 68, 70	77
* 78.1	1 610 102 052	Shim 0.4mm	65				
* 78.2	1 610 102 053	Shim 0.5mm	65	894	2 603 435 015	Screw {2}	89
79	1 928 491 082	Screw	89	897	1 617 000 383	Service Pack w/pos. 59, 61, 65, 68, 69, 70, 72, 73, 75, 76, 95	78
80	1 614 615 003	Spring	27				
81	1 614 601 033	Retainer {3}	89				
83	1 614 601 036	Retainer	89	898	1 615 437 503	Oil w/pos. 74	1