

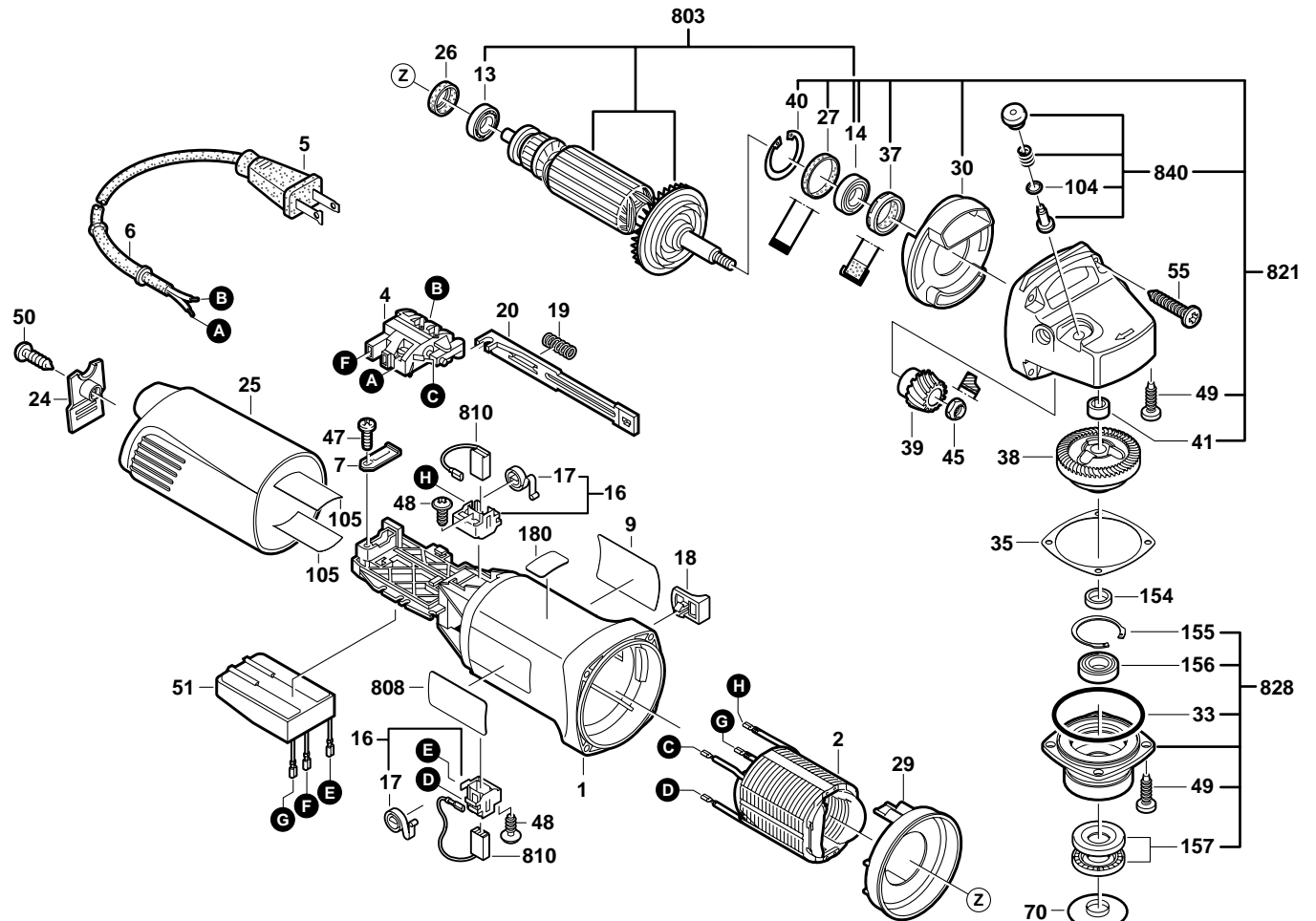
BOSCH

January 2003
INDUSTRIAL

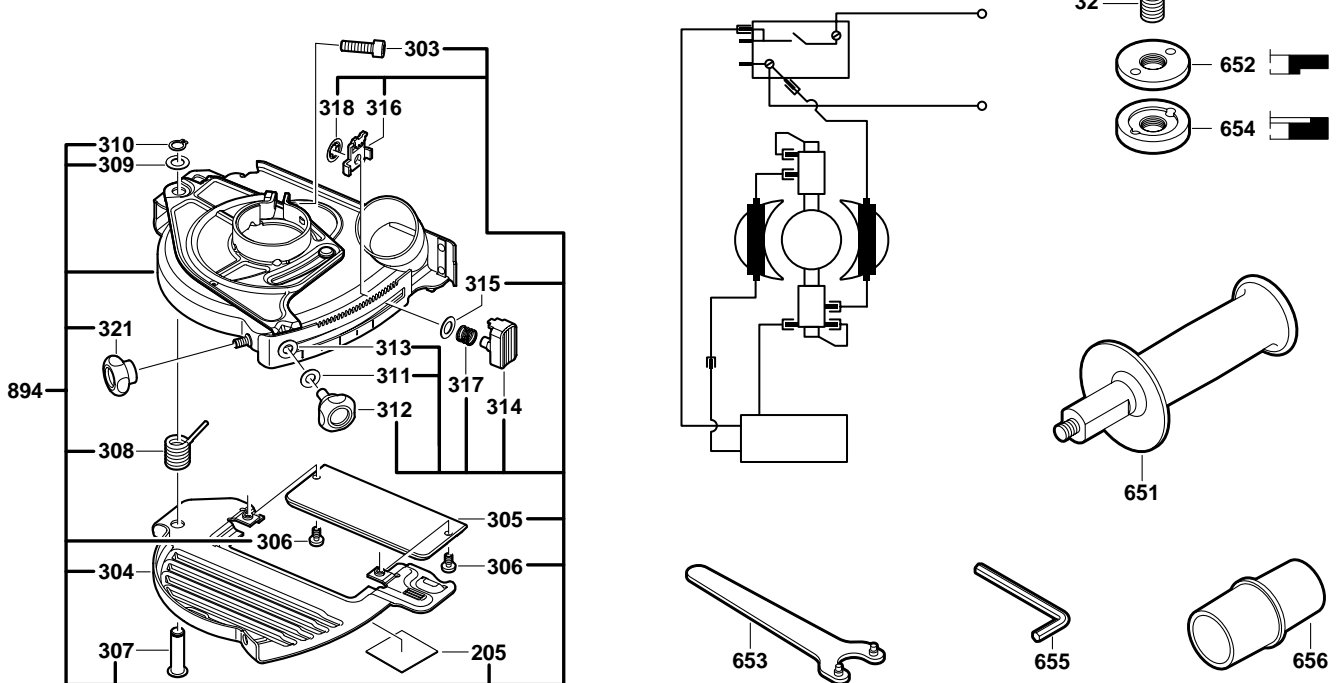
TUCKPOINTING GRINDER

Model 0601775739

1775E



893 = Motor Complete



1775E TUCKPOINTING GRINDER

Pos.	Part Number	Description {Qty.}	F/C	Pos.	Part Number	Description {Qty.}	F/C
1	1 605 108 213	Motor Housing	71	157	3 600 105 009	Seal {2}	77
2	1 604 220 311	Field 120V	22	180	3 601 119 229	Label	9
4	1 607 200 137	Switch On/Off	15	205	3 601 119 236	Label	9
5	3 604 460 555	Cord	11	303	2 910 141 201	Screw	89
6	1 600 703 031	Strain Relief	11	304	3 605 510 047	Cover	92
7	1 601 302 017	Cord Clamp	89	305	3 600 150 030	Lens	92
9	3 601 119 189	Label	9	306	2 914 411 412	Screw {2}	89
13	2 600 905 032	Ball Bearing	60	307	3 600 150 032	Pin	66
14	2 610 010 409	Ball Bearing	61	308	3 604 611 035	Spring	27
16	1 601 323 025	Brush Holder {2}	25	309	2 916 190 019	Washer	65
17	1 604 652 014	Brush Spring {2}	27	310	2 916 649 005	Retaining Ring	89
18	1 602 026 080	Switch Button	63	311	2 916 011 014	Washer	65
19	1 604 611 026	Switch Spring	27	312	3 603 435 030	Screw	89
20	1 602 319 010	Slide Lever	64	313	3 600 240 009	Washer	65
24	1 605 500 228	Cover	74	314	3 603 239 002	Button	63
25	1 600 500 226	Housing Cover	74	315	2 916 190 019	Washer	65
26	1 600 502 023	Rubber Bearing Sleeve	82	316	3 601 023 014	Safety Catch	9
27	1 600 206 025	Rubber Bearing Sleeve	82	317	3 604 611 036	Spring	27
29	1 600 591 025	Air Deflector	24	318	3 600 240 008	Washer	65
30	1 600 591 014	Baffle	24	321	3 603 435 031	Knob	63
32	3 603 523 045	Spindle 5/8"-11	52	651	1 602 025 027	Auxiliary Handle	9
33	1 600 210 124	O-Ring	78	652	2 610 992 248	Flange 5/8"-11	91
35	1 600 136 013	Shim 0.1mm	65	653	1 607 950 052	Spanner Wrench	9
37	1 600 290 016	Seal	77	654	2 610 910 341	Flange 5/8"-11	91
38	1 606 333 610	Crown Gear	32	655	1 907 950 006	Allen Wrench	9
39	1 606 333 259	Gear	33	656	2 610 913 186	Vacuum Adapter (VAC002)	
40	1 600 119 011	Retaining Ring	89	803	3 604 010 094	Armature w/Fan 120V w/pos. 13, 14	AW
41	1 600 910 018	Needle Bearing	56				
45	1 603 300 016	Nut	89	808	3 601 119 289	Nameplate	9
47	2 912 401 018	Screw	89	810	1 607 014 161	Brush Set	26
48	2 912 401 005	Screw {2}	89	821	3 607 030 377	Gear Housing Assembly w/pos. 14, 27, 30, 37, 40, 41, 49, 840	72
49	1 603 435 026	Screw {4}	89				
50	2 912 401 420	Screw	89				
51	1 607 233 118	Speed Control	17	828	3 605 805 036	Gear Cover Assembly w/pos. 33, 49, 155 - 157	51
55	2 912 401 022	Screw {4}	89				
70	3 600 150 023	Cover	79	840	1 607 000 253	Spindle Lock Assembly w/pos. 104	81
104	1 600 210 044	O-Ring	78				
105	1 601 008 005	Insulating Plate {2}	9	893	3 607 031 561	Power Unit (PA500) w/pos. 1 - 180, 803 - 840	9
154	3 600 913 010	Spacer	82				
155	3 600 283 045	Retaining Ring	89	894	3 605 510 049	Guard Assembly (TG500) w/pos. 205 - 321	92
156	3 600 905 130	Ball Bearing	51				

Service Notes: