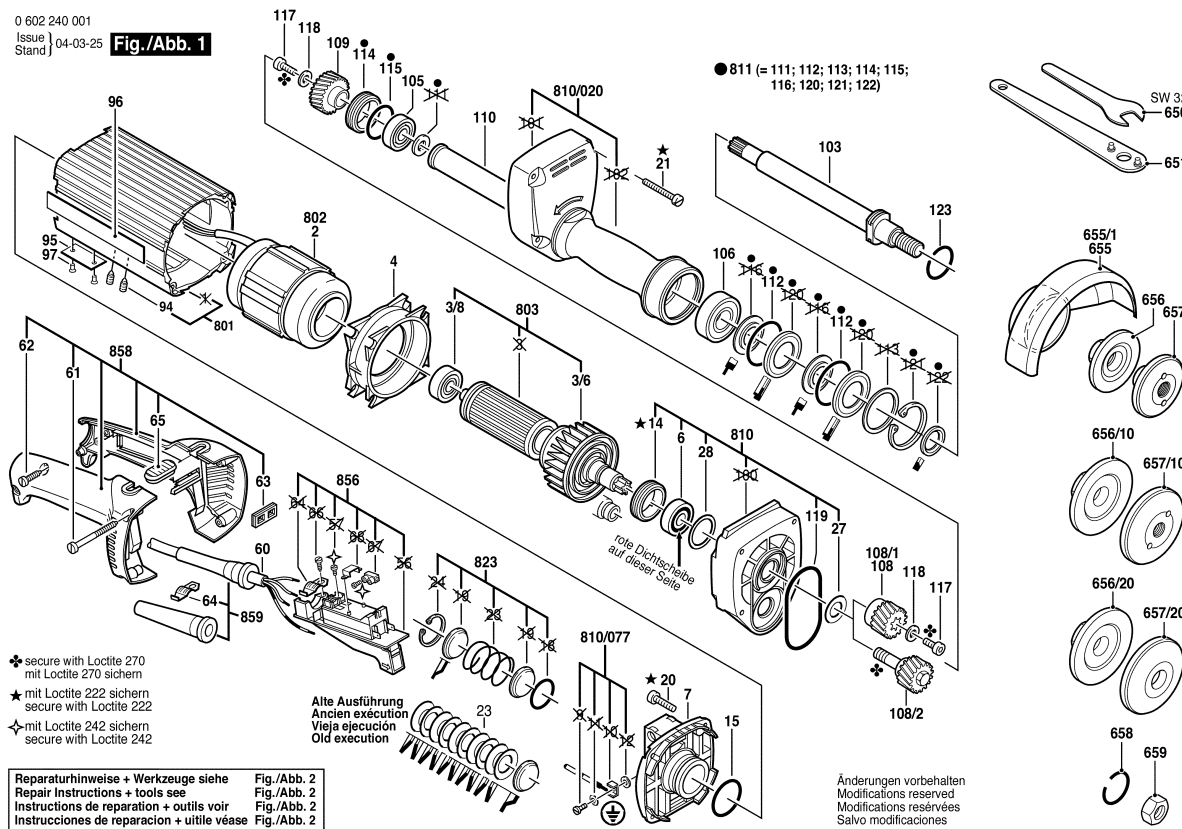


0 602 240 001
Issue
Stand } 04-03-25

Fig./Abb. 1



Please observe: Repairing, modifying and testing of electro-tools are to be performed professionally. The safety regulations according to IEC, EN, VDE, AFNOR and other regulations of the individual countries are to be observed. Technical and price changes reserved. Products and prices / price groups will be continuously updated.

Status: 9/25/2002

Item	Pc	Order No.	Description	Note/predecessor	PG	
2	1	3 604 229 064	STATOR	200V/300HZ .	00	T
2/20	1	3 604 478 004	RECEPTACLE	.	00	T
3/6	1	1 606 610 069	FAN	.	00	T
3/8	1	3 600 905 119	DEEP-GROOVE	.	00	T
4	1	3 600 209 006	AIR-DEFLECTOR	.	00	T
6	1	3 600 905 095	DEEP-GROOVE	.	00	T
7	1	3 605 805 009	BEARING FLANGE	.	00	T
14	1	3 603 344 024	THREADED RING	.	00	T
15	1	1 600 210 037	O-RING	.	00	T
20	4	3 603 410 005	THREAD-FORMING	.	00	T
21	4	3 603 410 007	THREAD-FORMING	AM 6x80-ST .	00	T
23	1	3 604 611 019	COMPRESSION	.	00	T
27	1	3 600 100 049	SEALING DISC	.	00	T
28	1	3 600 100 048	SEALING DISC	.	12	T
60	1	3 604 462 017	ELEC. CABLE	.	00	T
61	2	1 603 435 008	TAPPING SCREW	BZ4,8x63 MM .	11	T
62	2	2 910 211 020	TAPPING SCREW	DIN 7971-BZ3,9x19 .	00	T
63	1	1 602 388 027	CABLE RUN	.	11	T
64	1	3 601 303 002	FASTENING CLAMP	.	00	T
64	1	3 601 303 004	FASTENING CLAMP	.	00	T
65	1	1 602 388 026	STORAGE LEDGE	BLUE	11	T
94	2	2 912 081 116	SET SCREW	DIN 915-M4x6-45H .	00	T
95	1	3 601 106 053	NAMEPLATE	.	00	T
96	2	3 601 110 047	MANUFACTURER'S	.	00	T
97	2	3 603 133 001	GROOVED NAIL	DIN 1476-2x5MM .	00	T
99	1	3 601 119 236	REFERENCE	.	15	T
103	1	3 606 120 009	GRINDING SPINDLE	.	00	T
105	1	3 600 905 060	DEEP-GROOVE	.	00	T
106	1	3 600 905 057	DEEP-GROOVE	.	00	T
108	1	3 606 300 094	TOOTHED GEAR	Z=25 .	00	T
109	1	3 606 300 093	TOOTHED GEAR	Z=44 .	00	T
110	1	3 600 700 036	SPACER SLEEVE	.	00	T
112	2	3 600 210 058	O-RING	43x2 MM .	00	T
114	1	3 603 344 024	THREADED RING	.	00	T

Item	Pc	Order No.	Description	Note/predecessor	PG	
115	1	3 600 210 050	O-RING	33x2.5 MM .	00	T
117	2	2 910 141 201	HEX SOCKET HEAD	DIN 912-M6x20-8.8 .	13	T
118	2	3 600 100 043	PLAIN WASHER	.	00	T
119	1	1 600 210 033	O-RING	80x1,8 MM .	11	T
123	1	2 916 609 063	SPRING RETAINING	DIN 9045-24 .	00	Z
650	1	3 607 950 010	SINGLE-HEAD ENG.	SW32 .	00	Z
651	1	1 607 950 061	PIN-TYPE	.	16	Z
655	1	3 605 510 031	PROTECTIVE	Ø 150 MM .	00	T
656	1	3 605 703 068	CLAMPING-FLANGE	.	00	T
656/10	1	3 605 703 072	CLAMPING-FLANGE	.	00	T
657	1	3 605 703 077	CLAMPING RING	.	00	T
657/10	1	3 605 703 078	CLAMPING RING	.	00	T
658	1	2 916 609 063	SPRING RETAINING	DIN 9045-24 .	00	Z
801	1	3 605 108 160	MOTOR HOUSING	GR.88 .	00	T
802	1	3 607 031 251	ASSEMBLY OF	200V/300HZ .	00	T
803	1	3 604 080 024	ROTOR	.	00	T
803	1	3 604 080 025	ROTOR	.	00	T
810	1	3 607 031 292	BEARING FLANGE	.	00	T
810/020	1	3 607 031 291	SPINDLE BEARING	.	00	T
810/077	1	3 607 031 299	SET OF EARTLING	.	00	T
811	1	3 607 031 290	FASTENER KIT	.	00	T
823	1	3 607 031 296	SPRING SET	.	00	T
856	1	3 607 031 298	SWITCH KIT	.	00	T
858	1	3 607 031 297	HANDLE	.	00	T
859	1	3 607 031 550	GROMMET	.	00	T