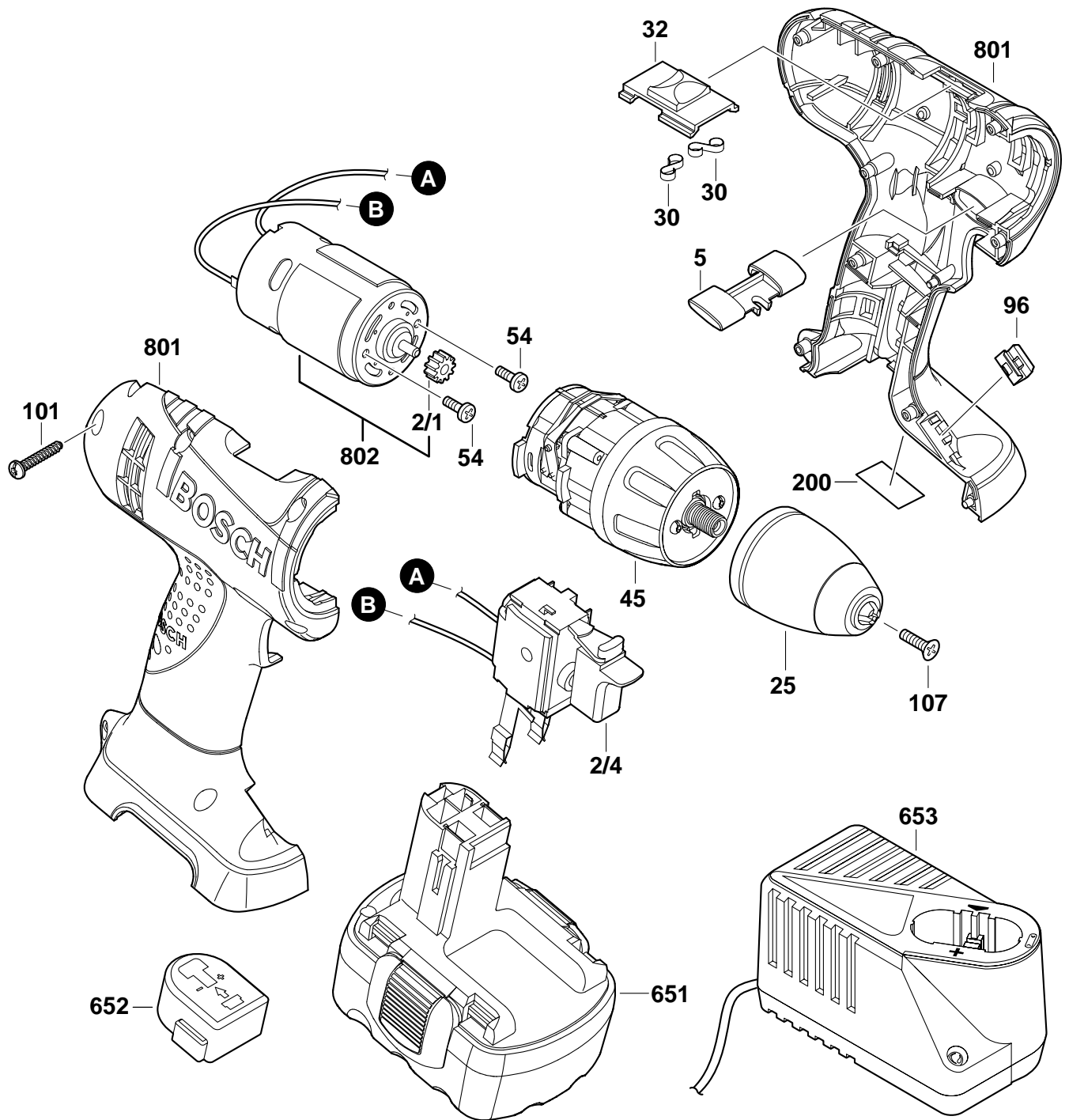


# BOSCH

September 2002

INDUSTRIAL

**9.6V DRILL / DRIVER****Model 0601916660****32609**

Pos.	Part Number	Description {Qty.}	F/C	Pos.	Part Number	Description {Qty.}	F/C
2/1	2 610 967 116	Pinion Gear	33	101	2 914 201 668	Screw {8}	89
2/4	2 607 200 461	Switch	15	107	2 603 421 228	Reverse Screw	85
5	2 601 099 114	Lever	9	200	2 601 116 165	Nameplate	9
25	2 608 572 172	3/8" Keyless Chuck	91	651	2 607 335 505	Battery 9.6V	18
30	2 604 690 022	Spring {2}	27	652	2 609 100 101	Battery Cap	9
32	2 601 099 115	Lever	64	653	2 607 224 445	Multi-Volt Charger	18
45	2 606 200 156	Drive Assembly	40	801	2 605 105 927	Housing	71
54	2 603 414 049	Screw {2}	89	802	2 607 022 868	Motor Assembly	19
96	2 604 690 026	Spring	9			w/pos. 2/1	

+ = Not Illustrated \* = As Required F/C = Failure Code AW = Refer to AW Labor Time Chart