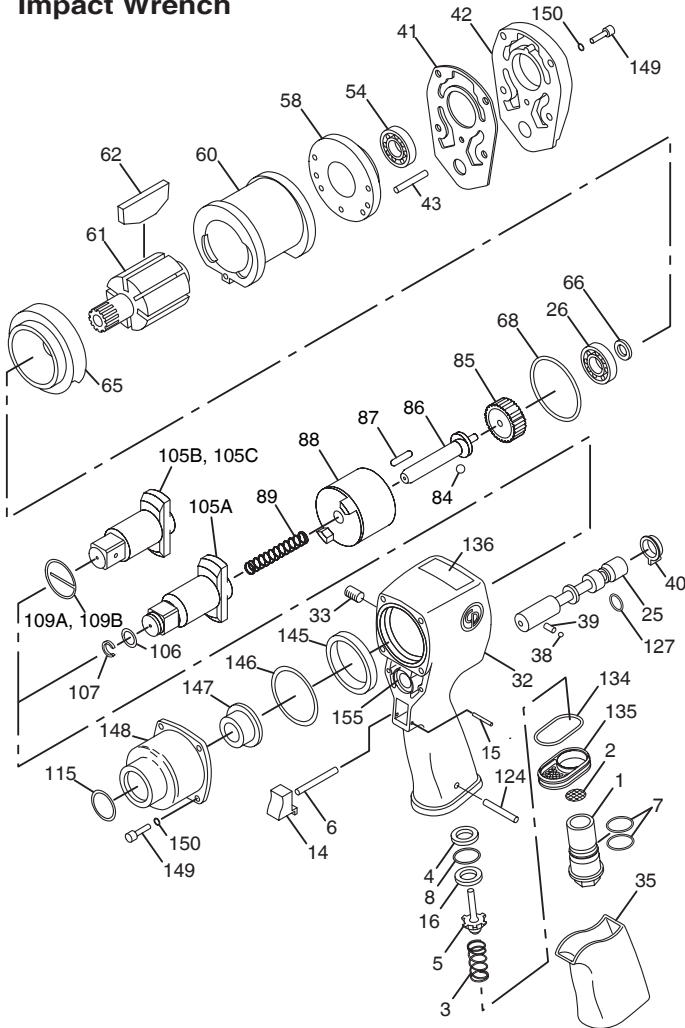


**CP6760 Series**  
**Impact Wrench**



Index No.	Part No.	Description	No. Req'd.
1	CA148714	Bushing-Air Inlet	1
2	CA059037	Screen-Air	1
3	CA142464	Spring-Throttle	1
4	CA149095	Spacer	1
5	CA156876	Valve-Throttle	1
6	CA144831	Pin-Throttle Push	1
7	C105693	O-Ring (-017)	2
8	CA149096	O-Ring	1
14	CA147017	Trigger-Throttle	1
15	CA144836	Pin-Trigger	1
16	C139037	Seat-Throttle	1
25	CA157338	Valve-Reverse	1
26	C063836	Bearing-Ball	1
32	C157449	Housing-Motor (Incl: CA157360) Bushing-Reverse Valve)	1
33	S089953	Plug-Pipe (1/16 in. NPT)	1
35	8940158432	Handle-Cover	1
38	S008613	Ball-Steel (Ø.156)	1
39	CA147021	Spring-Detent	1
40	CA148709	Regulator-Switch	1
41	CA155796	Gasket-Housing Cover	1
42	C157450	Cover-Motor Housing	1
43	CA129674	Pin-Liner Dowel	1
54	C068659	Bearing-Ball	1
58	CA156845	Plate-Rear End	1
60	CA157468	Liner	1
61	CA156843	Rotor	1
62	CA145359	Set-Rotor Blade (6)	1
65	CA156842	Plate-Front End	1
66	C148136	Seal-Oil	1
68	C148135	O-Ring (-036)	1
84	C011086	Ball-Steel (3/8" dia.)	1
85	CA157664	Coupling	1
86	CA157665	Shaft-Timing	1
87	P001915	Pin-Timing	1
88	CA157663	Dog-Clutch	1
89	CA129644	Spring-Clutch	1
105A	CA157667	Assembly-Anvil (CP6760-RSR)(3/4"sq.w/ring) (Incl: Index Nos. 106, 107)	1
105B	CA157666	Anvil (CP6760-RS)(3/4"sq.)	1
105C	CA157668	Anvil (CP6760-RS1)(1"sq.)	1
106	CA083354	O-Ring	1
107	CA087404	Retainer-Socket	1
109A	C134690	Retainer	1
109B	C155472	Retainer	1
115	C137324	Seal-Oil	1
124	R086991	Pin-Roll	1
127	CA148710	O-Ring (-205)	1
134	CA148528	Gasket	1
135	CA147023	Deflector-Exhaust	1
136	CA156893	Decal-Safety Warning	1
145	CA157674	Ring-Alignment	1
146	CA156916	O-Ring	1
147	CA157662	Bushing-Shank	1
148	C157438	Housing-Clutch	1
149	CA129678	Screw	8
150	CA129679	Lockwasher	8
155	CA148724	Decal-Decorative	1

**Tune-Up Kit**

C157526 (Incl: Index Nos. 7, 8, 16, 38, 39, 41, 62, 66, 68, 106, 107, 115, 127, 134, 146)

**Repair Kit (CP6760-RS) 3/4" Sq. Dr.**

C157530 (Incl: All Parts in Tune-Up Kit Plus Index Nos. 26, 54, 84, 86, 87, 89, 105B)

**Repair Kit (CP6760-RSR) 3/4" Sq. Dr.**

C157531 (Incl: All Parts in Tune-Up Kit Plus Index Nos. 26, 54, 84, 86, 87, 89, 105A)

**Repair Kit (CP6760-RS1) 1" Sq. Dr.**

C157532 (Incl: All Parts in Tune-Up Kit Plus Index Nos. 26, 54, 84, 86, 87, 89, 105C)

**Accessories**

CP Ret Ring Part No.	Identification Number Molded into Ring	Inside Diameter of Ret Ring (in.)	For use on Square Drive (in.)
C155467	10005S	1-14"	3/4"
C155468	10032S	1-7/16"	3/4"
C134690*	10034S	1-5/8"	3/4"
C134691	18708S	1-3/4"	3/4"
C155585	18710S	2"	3/4"
C155489	18715S	2-1/8"	3/4"
C155586	18716S	2-1/4"	3/4"
C155470	10008S	1-3/4"	1"
C155471	10010S	2"	1"
C155472*	10015S	2-1/8"	1"
C134692	10016S	2-1/4"	1"
C155473	10017S	2-1/2"	1"
C155474	10019S	2-5/8"	1"