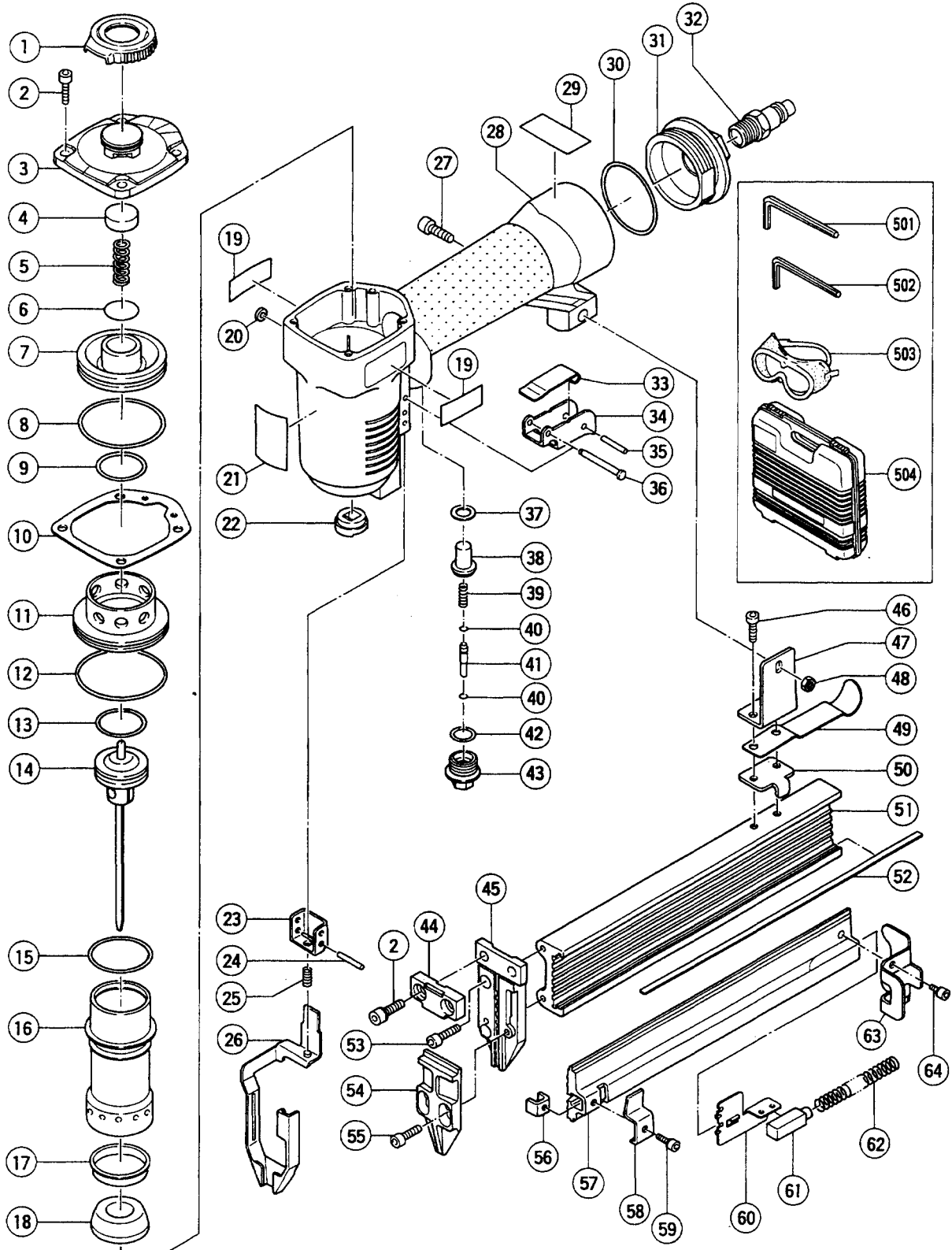


PNEUMATIC TOOL PARTS LIST

■ BRAD NAILER
Model NT 32AE

1998 • 3 • 10
(E1)



PARTS

NT 32AE

ITEM NO.	CODE NO.	DESCRIPTION	NO. USED	REMARKS
1	882-270	DEFLECTOR	1	
2	882-271	BOLT M5X20	6	
3	882-350	CAP	1	
4	882-273	SEAL	1	
5	882-274	SPRING	1	
6	882-275	O - RING (I.D13.8)	1	
7	882-276	HD.VALVE PISTON	1	
8	882-277	O - RING (I.D31.8)	1	
9	882-278	O - RING (I.D23)	1	
10	882-279	PACKING	1	
11	882-280	COLLAR	1	
12	882-281	O - RING (I.D43)	1	
13	882-282	O - RING (I.D21.7)	1	
14	882-351	DRIVER UNIT	1	
15	882-284	O - RING (I.D29.87)	1	
16	882-352	CYLINDER	1	
17	882-286	CYLINDER RING	1	
18	882-353	BUMPER	1	
19		LABEL	2	
20	882-296	RING	1	
21	880-450	WARNING LABEL	1	
22	882-288	JOINT GUIDE	1	
23	882-305	SAFETY GUIDE	1	
24	882-306	SPRING PIN D3X25	2	
25	882-307	SPRING	1	
26	882-354	SAFETY	1	
27	882-314	HEX.SOCKET HD.BOLT M4X16	1	
28	882-301	GUN BODY UNIT	1	
29		NAME PLATE	1	
30	882-302	O - RING (I.D37)	1	
31	882-303	END CAP	1	
32	882-304	AIR PLUG	1	
33	882-297	SAFETY	1	
34	882-298	TRIGGER	1	
35	882-299	SPRING PIN D2.5X16	1	
36	882-300	STEPPED PIN	1	
37	882-289	SEAL	1	
38	882-290	TRIGGER VALVE HEAD	1	
39	882-291	SPRING	1	
40	882-293	O - RING (I.D2.5)	2	
41	882-292	TRIGGER VALVE STEM	1	
42	882-294	O - RING (I.D13)	1	
43	882-295	TRIGGER VALVE GUIDE	1	
44	882-356	DRIVER GUIDE COVER(B)	1	
45	882-355	DRIVER GUIDE	1	
46	882-315	BOLT M4X12	2	
47	882-317	FIXED PLATE	1	
48	882-316	LOCK NUT M4	1	
49	882-318	STOPPER	1	
50	882-358	STOPPER	1	
51	882-359	MAGAZINE(A)	1	

*: ALTERNATIVE PARTS

SUBJECT: CHANGE OF MECHANISM TO CLEAR CLOGGING OF NAILS AND OTHERS, MODELS NT32AE AND NT50AE

ISSUED ON: 1/20/2004

ISSUED BY HITACHI KOKI CO., LTD.

1. SUMMARY:

MECHANISM TO CLEAR CLOGGING OF NAILS IS CHANGED FROM BOLT (2 PCS.) LOOSENING TYPE TO ONE-TOUCH LOCK LEVER TYPE. IN ADDITION, CYLINDER AND COLLAR ARE COMBINED IN ONE AND THE MATERIAL IS CHANGED FROM ALUMINUM TO PLASTIC.

2. REASON FOR CHANGE:

SALES EFFICIENCY

3. CHANGED PARTS LIST NO:

MODEL NAME	NT32AE	NT50AE										
PARTS LIST NO.	1007	1008										

4. AFFECTED PARTS:

MODEL NAME	(A) BEFORE CHANGE (THROUGH JUL. 2003)					INTER-CHANGEABILITY	(B) AFTER CHANGE (SINCE AUG. 2003)					
	ITEM NO.	CODE NO.	PART NAME	UNIT PCS.	*SUPPLY		ITEM NO.	CODE NO.	PART NAME	UNIT PCS.	REMARKS	PRICE (YEN)
NT32AE	11	882280	COLLAR	1	C							
	15	882284	O-RING (I.D 29.87)	1	C							
	16	882352	CYLINDER (TILL 7, 2003)	1	C	-X-	16A	882367	CYLINDER	1	SINCE 8, 2003	-
	17	882286	CYLINDER RING	1	C							
	28	882301	GUN BODY UNIT (TILL 7, 2003)	1	C	-X-	28A	882339	GUN BODY UNIT	1	MARK: P SINCE 8, 2003	-
	35	882299	SPRING PIN D2.5 X 16	1	C	<->	35	882299	SPRING PIN D2.5 X 16	2		-
	44	882356	DRIVER GUIDE COVER (B) (TILL 7, 2003)	1	C	-X-	44A	882368	DRIVER GUIDE COVER (B)	1	SINCE 8, 2003	-
	45	882355	DRIVER GUIDE (TILL 7, 2003)	1	C	-X-	45A	882369	DRIVER GUIDE	1	SINCE 8, 2003	-
	54	882357	DRIVER GUIDE COVER (A) (TILL 7, 2003)	1	C	-X-	54A	882370	GUIDE PLATE (A)	1	SINCE 8, 2003	-
	55	882313	HEX. SOCKET HD. BOLT M4X10	2	C							
NT50AE							65	882371	LOCK LEVER	1		-
							66	882327	SPRING PIN D2.5 X 12	1		-
	11	882280	COLLAR	1	C							
	15	882284	O-RING (I.D 29.87)	1	C							
	16	882285	CYLINDER (TILL 7, 2003)	1	C	-X-	16A	882333	CYLINDER	1	SINCE 8, 2003	-
	26	882308	SAFETY (TILL 7, 2003)	1	C	-X-	26A	882334	SAFETY	1	MARK:O SINCE 8, 2003	-
	28	882301	GUN BODY UNIT (TILL 7, 2003)	1	C	-X-	28A	882339	GUN BODY UNIT	1	MARK:P SINCE 8, 2003	-
	35	882299	SPRING PIN D2.5 X16	1	C	<->	35	882299	SPRING PIN D2.5 X16	2		-
	44	882310	DRIVER GUIDE COVER (B) (TILL 7, 2003)	1	C	-X-	44A	882335	DRIVER GUIDE COVER (B)	1	SINCE 8, 2003	-
	45	882309	DRIVER GUIDE (TILL 7, 2003)	1	C	-X-	45A	882336	DRIVER GUIDE	1	SINCE 8, 2003	-
55	882312	PLATE (A) (TILL 7, 2003)	1	C	-X-	55A	882337	GUIDE PLATE (A)	1	SINCE 8, 2003	-	
56	882313	HEX. SOCKET HD. BOLT M4X10	2	C								
60	882327	SPRING PIN D2.5 X 12	2	C	<->	60	882327	SPRING PIN D2.5 X12	3		-	
							63	882338	LOCK LEVER	1		-

INTER-CHANGEABILITY

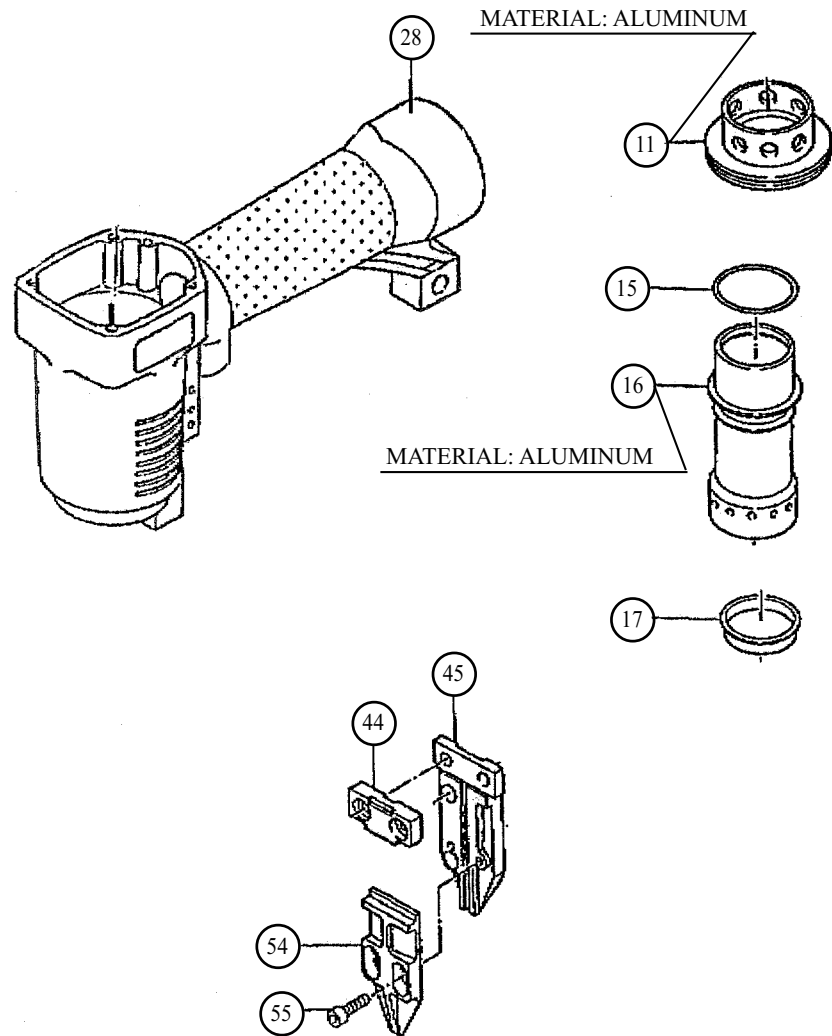
(A) <->(B): INTERCHANGEABLE
(A) <- (B): (B) CAN BE A SUBSTITUTE FOR (A)

(A) -X- (B): NOT INTERCHANGEABLE
(A) -> (B): (A) CAN BE A SUBSTITUTE FOR (B)

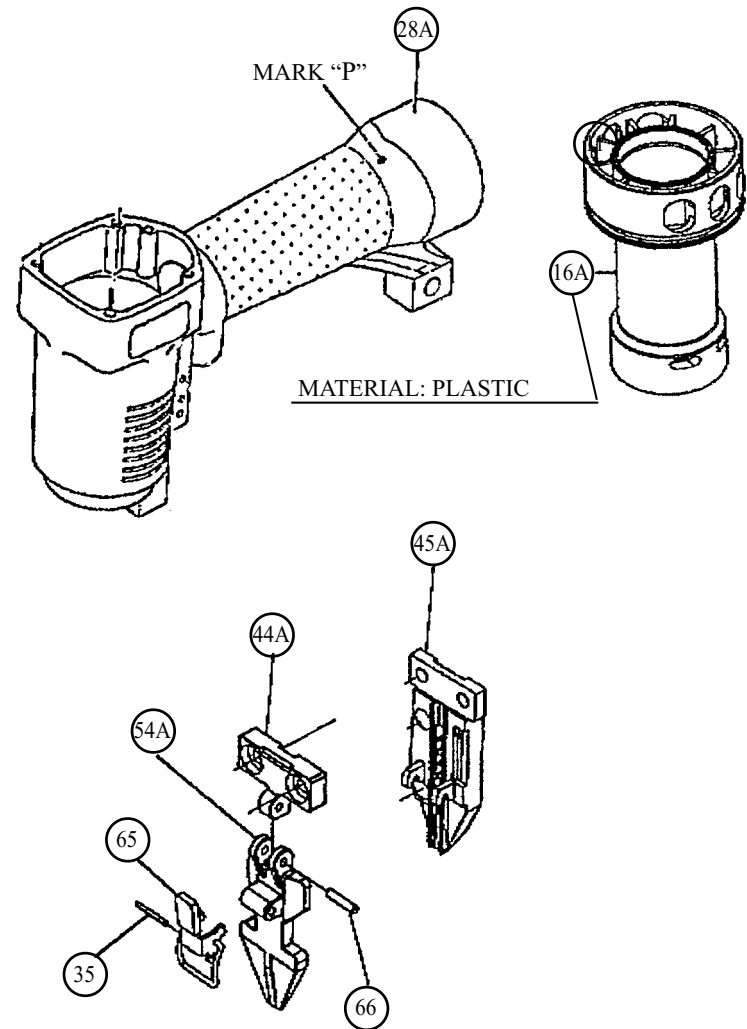
* SUPPLY "C": "CONTINUED". "D": "DISCONTINUED" APPLIES ONLY TO THE SUBJECT MODEL(S). THE INDICATED PART MAY STILL BE SUPPLIED FOR OTHER APPLICABLE MODELS. (SEE "INTERCHANGEABILITY LIST".)

5. ILLUSTRATION OF CHANGE: MODEL NT32AE

(A) BEFORE CHANGE

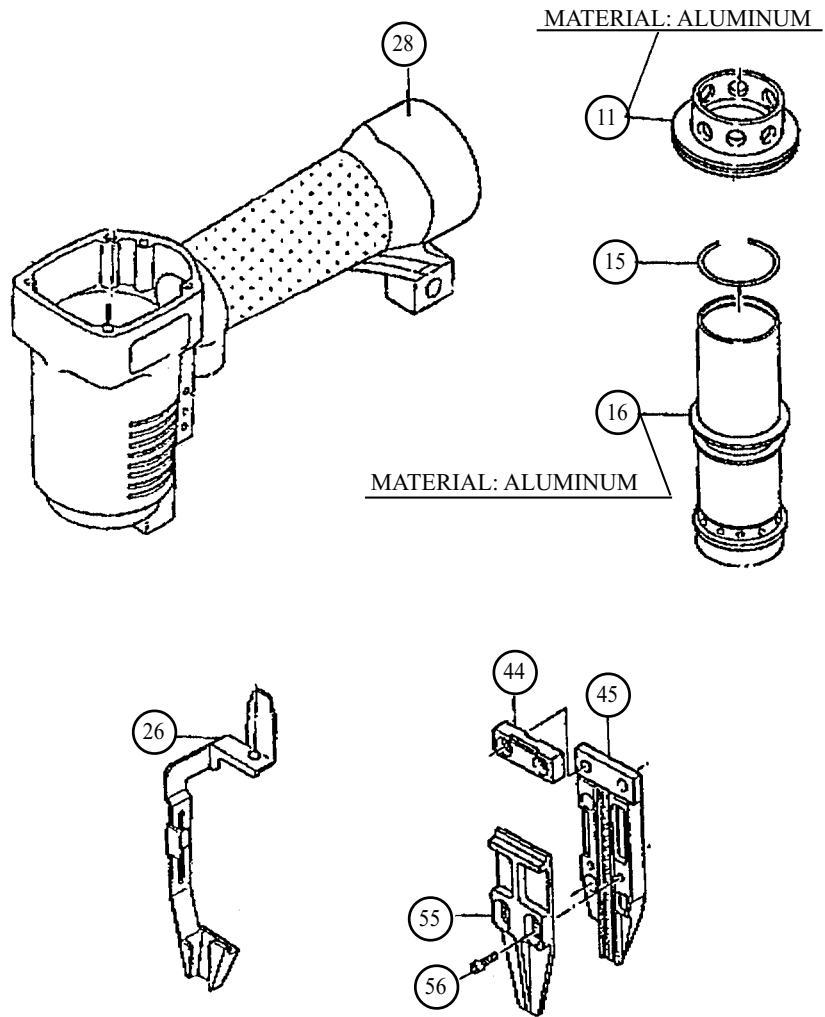


(B) AFTER CHANGE



5. ILLUSTRATION OF CHANGE: MODEL NT50AE

(A) BEFORE CHANGE



(B) AFTER CHANGE

