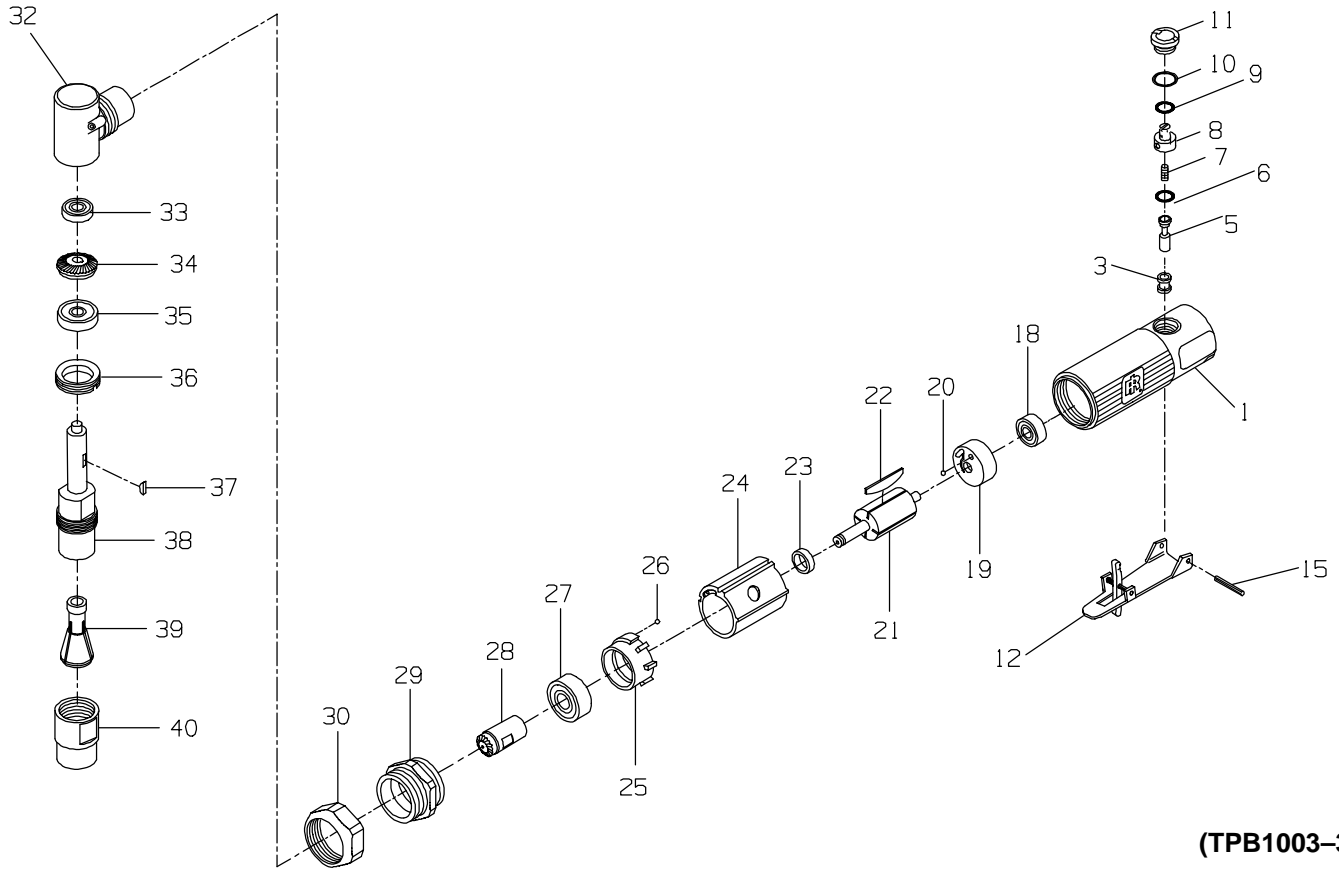




MODELS 301 ANGLE DIE GRINDER



(TPB1003-3)

PART NUMBER FOR ORDERING

	Motor Housing Assembly	301-A40	24	Cylinder	301-3
1	Motor Housing	301-40	25	Front Endplate	301-11
*	Nameplate	301-301	26	Ball	301-98
3	Throttle Valve Bushing	301-503	27	Front Rotor Bearing	301-24
5	Throttle Valve	301-302	28	Pinion	301-551
6	Throttle Valve O-Ring	301-159	29	Clamp Nut	301-306
7	Spring	301-51	30	Nut	301-27
8	Regulator	301-249	32	Angle Housing Assembly	301-A550
9	Throttle Valve O-Ring	301-251	33	Bearing	301-22
10	Valve Cap O-Ring	301-206	34	Pinion	301-552
11	Valve Cap	301-266	35	Collet Bearing	301-24
12	Lever Assembly	301-A400	36	Cap	301-531
15	Lever Pin	301-120	37	Pinion Key	301-579
18	Rear Rotor Bearing	301-22	38	Collet Body	301-591
19	Rear End Plate	301-12	39	Collet (1/4")	301-700
20	Ball	301-98	40	Collet Nut	301-699
21	Rotor	301-53	*	Wrench	301-69
22	Vanes (set of 4)	301-42-4			
23	Spacer	301-448			

* Not illustrated.