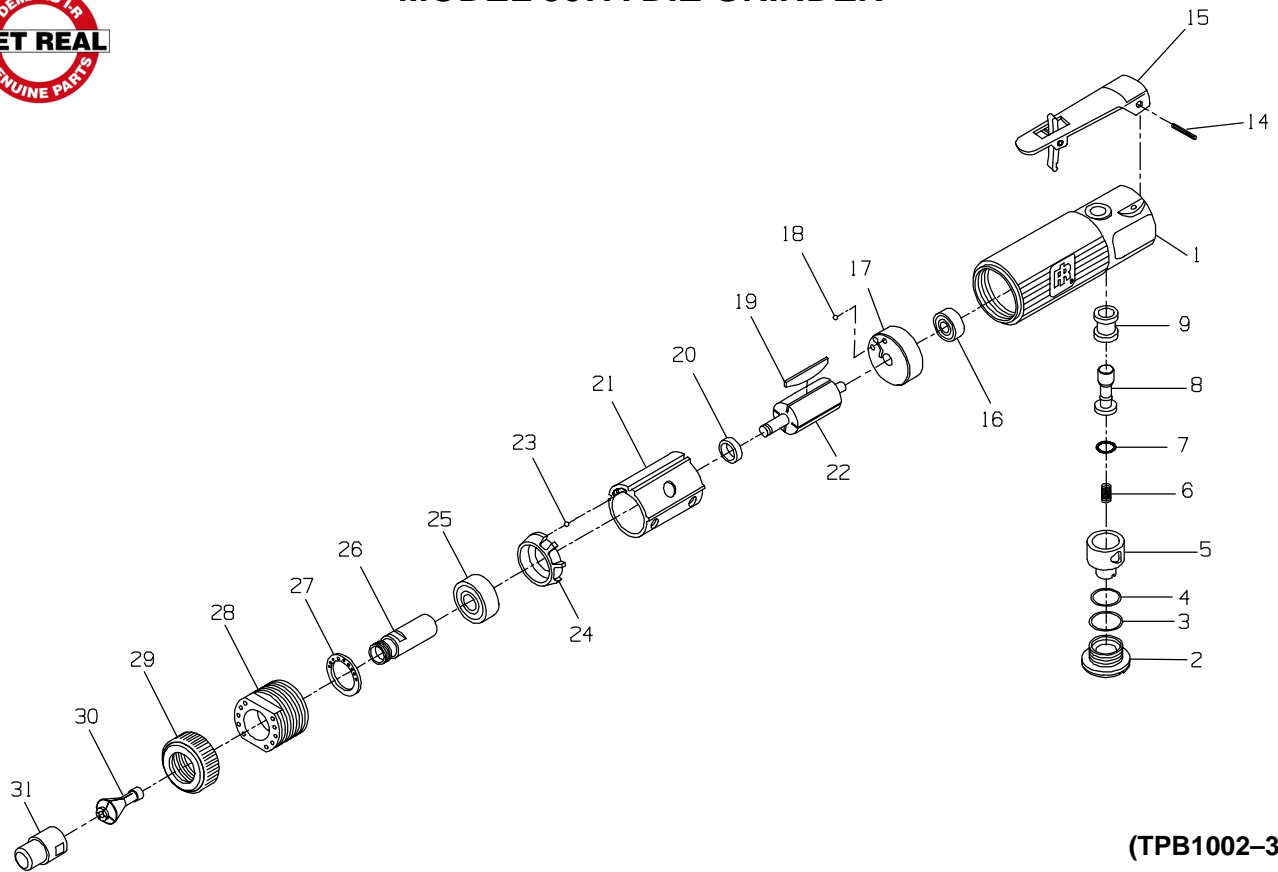




MODEL 307A DIE GRINDER



(TPB1002-3)

PART NUMBER FOR ORDERING

	Motor Housing Assembly	307A-40	18	Ball	301-98
1	Motor Housing	301-40	19	Vanes (set of 4)	301-42-4
*	Nameplate	307A-301	20	Spacer	301-448
2	Valve Cap	301-266	21	Cylinder	301-3
3	Valve Screw O-ring	301-206	22	Rotor	301-53
4	Regulator O-ring	301-251	23	Ball	301-98
5	Air Regulator	301-249	24	Front End Plate	307A-11
6	Valve Spring	301-51	25	Front Rotor Bearing	301-24
7	O-Ring	301-159	26	Collet Body	307A-214
8	Throttle Valve	301-302	27	Muffler	307A-311
9	Throttle Valve Bushing	301-503	28	Lock Nut	307A-27
14	Lever Pin	301-120	29	Housing Cap	307A-699
15	Lever Assembly	301A-400	30	Collet	301-700
16	Rear Rotor Bearing	301-22	31	Collet Nut	301-699
17	Rear End Plate	301-12	*	Wrench	301-69

* Not illustrated.