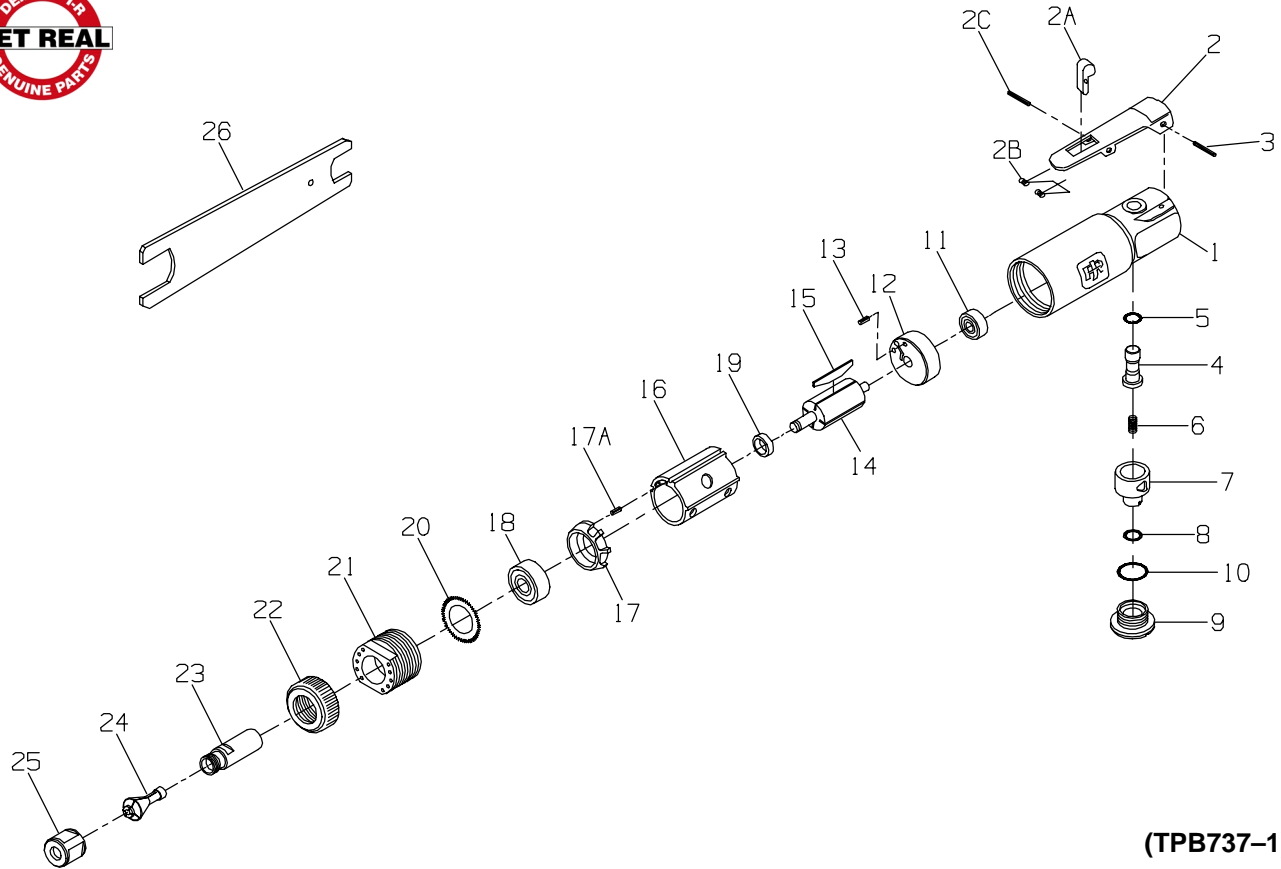




MODELS 308 AND 308-EU DIE GRINDERS



(TPB737-1)

PART NUMBER FOR ORDERING

1	Motor Housing Assembly including Throttle Valve Bushing	308-A40	18	Front Rotor Bearing	308-24
2	Throttle Lever Assembly	308-A400	19	Front Rotor Bearing Spacer	308-448
2A	Throttle Lever Latch	308-402	20	Exhaust Deflector	308-223
2B	Latch Spring	308-405	21	Motor Clamp	308-107
2C	Latch Pin	308-739	22	Housing Cap	308-23
3	Throttle Lever Pin	107-120	23	Collet Body	308-290
4	Throttle Valve Assembly	308-A302	24	1/4" Collet	308-700
5	Throttle Valve O-ring	308-159	25	Collet Nut	308-699
6	Throttle Valve Spring	308-51	26	Collet Wrench (2)	308-69
7	Air Regulator	308-249	*	Warning Label	
8	Air Regulator O-ring	308-251		for 308	WARNING-18-99
9	Throttle Valve Cap Assembly	308-A266		for 308-EU	EU-99
10	Valve Cap O-ring	308-206	*	Nameplate	
11	Rear Rotor Bearing	308-22		for 308	308-301
12	Rear End Plate Assembly	308-A12		for 308-EU	308-EU-301
13	End Plate Dowel	308-98			
14	Rotor	308-53			
15	Vane Packet (set of 4 Vanes)	308-42-4			
16	Cylinder	308-3			
17	Front End Plate Assembly	308-A11			
17A	End Plate Dowel	308-98			

* Not illustrated.