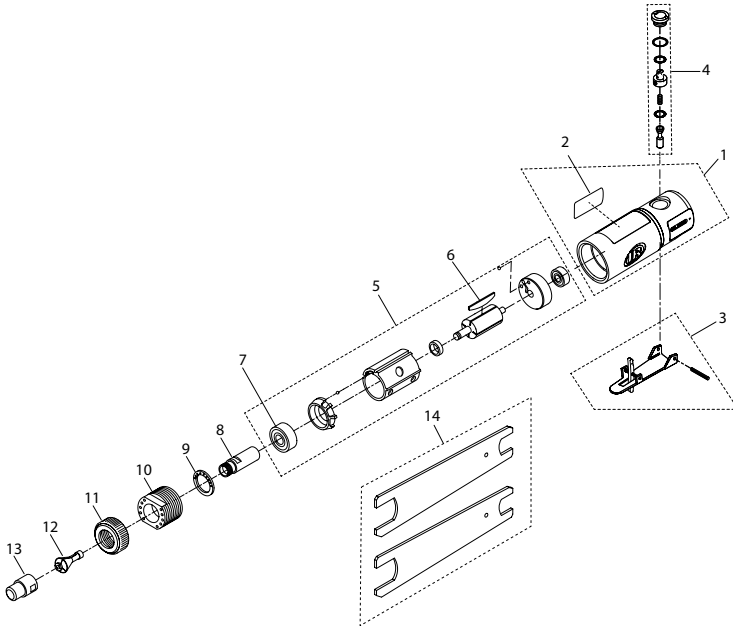


308A and 308A-EU Air Die Grinder Exploded Diagram



(Dwg. TP2233-2)

308A and 308A-EU Air Die Grinder Parts List

Item	Part Description	Part Number	Item	Part Description	Part Number
1	Housing Assembly		8	Collet Body	308A-290
	for 308A	308A-A40	9	Exhaust Deflector	308A-223
	for 308A-EU	308A-EU-A40	10	Motor Clamp	308A-107
2	Label		11	Housing Cap	308A-23
	for 308A	308A-301	12	Collet	
	for 308A-EU	308A-EU-301		for 308A (1/4")	301-700
3	Lever Assembly	308A-A400	*	for 308A-EU (6 mm)	301-700B
4	Valve Assembly	308A-A302	13	Collet Nut	301-699
5	Motor Assembly	308A-A53	14	Wrench Kit	308A-K69
6	Vane Set (4)	308A-42-4			
7	Motor Assembly Bearing	170-97			

* Note: All EU models are supplied with 6 mm Collet, assembled with the tool. However another 1/4" collet, part number 301-700 is given as an accessory packed separately in the box.

Parts and Maintenance

When the life of the tool has expired, it is recommended that the tool be disassembled, degreased and parts be separated by material so that they can be recycled.

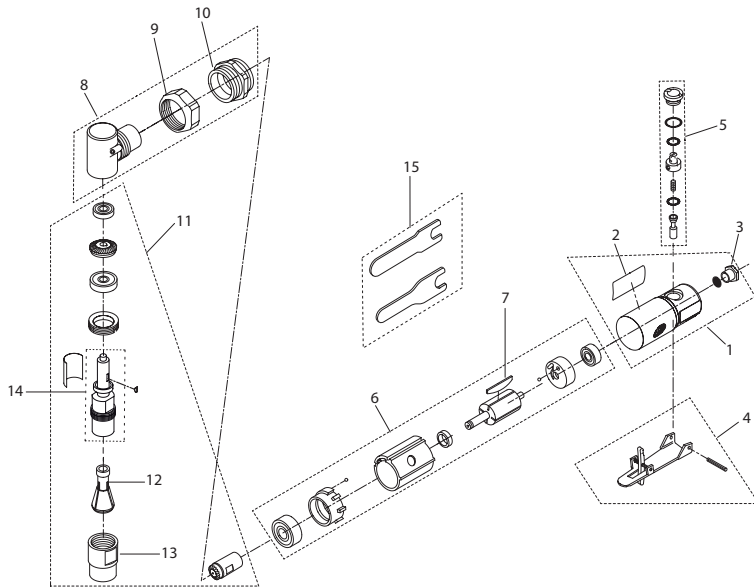
Tool repair and maintenance should only be carried out by an authorized Service Center.
Refer all communications to the nearest **Ingersoll Rand** Office or Distributor.

Related Documentation

For additional information refer to:
Air Die Grinder Product Safety Information Manual 04580288.
Air Die Grinder Product Information Manual 16573487.

Manuals can be downloaded from www.irtools.com.

302A and 302A-EU Air Die Grinder Exploded Diagram



(Dwg. TP2232)

302A and 302A-EU Air Die Grinder Parts List

Item	Part Description	Part Number	Item	Part Description	Part Number
1	Housing Assembly		11	Pinion Gear Kit	
	for 302A	302A-B40		for 302A	302A-A551
	for 302A-EU	302A-EU-B40		for 302A-EU	302A-EU-A551
2	Label		12	Collet	
	for 302A	302A-301		for 302A (1/4")	301-700
	for 302A-EU	302A-EU-301		* for 302A-EU (6 mm)	301-700B
3	Inlet Bushing	302A-565	13	Collet Nut	301-699
4	Lever Assembly	308A-A400	14	Arbor Kit	301-K591A
5	Throttle Valve Assembly	302A-B302	15	Wrench Kit	301-69
6	Motor Assembly	302A-A53			
7	Vane Set(4)	302A-42-4			
8	Elbow Assembly	302A-A550			
9	Nut	302A-27			
10	Motor Clamp Nut	301-306			

* Note: All EU models are supplied with 6 mm Collet, assembled with the tool. However another 1/4" collet, part number 301-700 is given as an accessory packed separately in the box.

Parts and Maintenance

When the life of the tool has expired, it is recommended that the tool be disassembled, degreased and parts be separated by material so that they can be recycled.

Tool repair and maintenance should only be carried out by an authorized Service Center. Refer all communications to the nearest **Ingersoll Rand** Office or Distributor.

Related Documentation

For additional information refer to:
 Air Die Grinder Product Safety Information Manual 04580288.
 Air Die Grinder Product Information Manual 16571625.

Manuals can be downloaded from www.irtools.com.



www.irtools.com

© 2007 Ingersoll Rand Company

Form 16573511

Edition 7

November 2007