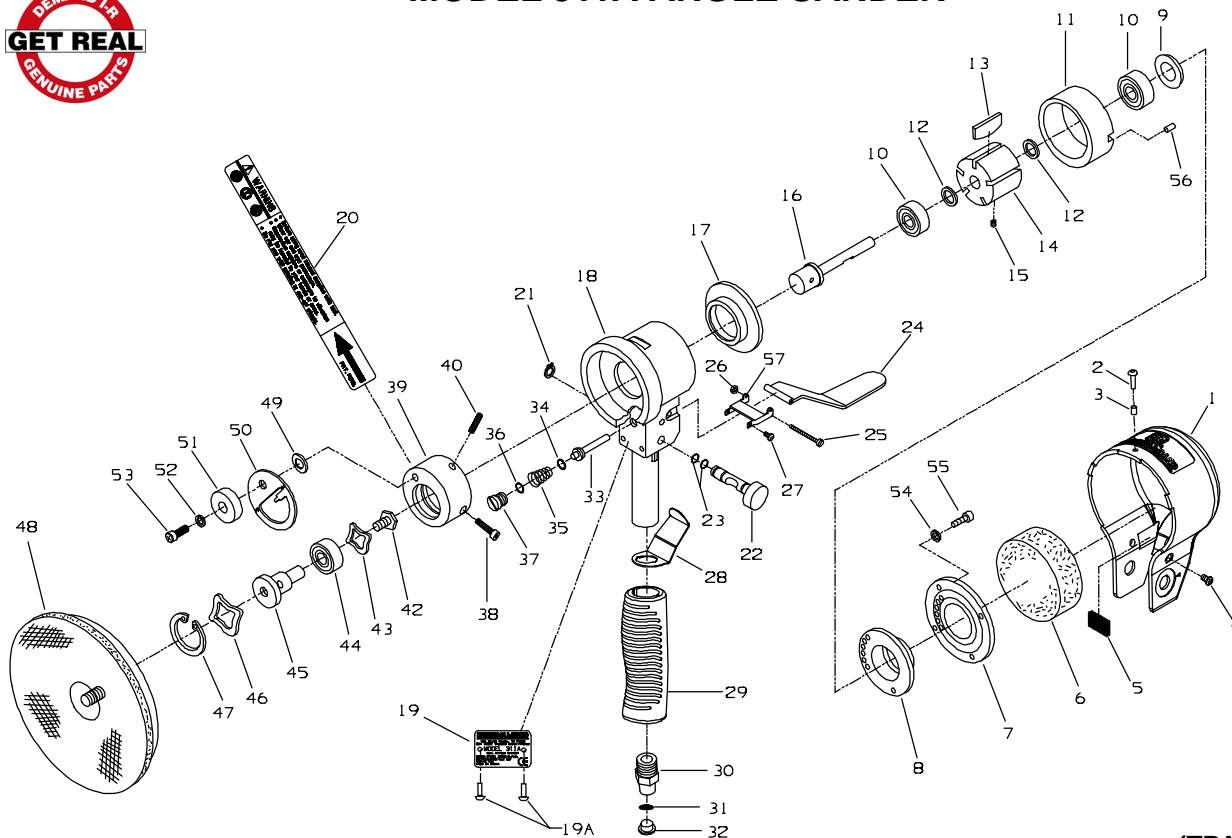




# MODEL 311A ANGLE SANDER



(TPA1663-1)

**PART NUMBER FOR ORDERING**

1	Motor Cover .....	311A-109	28	Second Lever .....	311A-275
2	Rivet .....	311A-156	29	Handle Grip .....	311A-160
3	Sleeve .....	311A-350	30	Air Inlet .....	311A-565
4	Screw (2) .....	311A-78	31	Air Screen .....	311A-61
5	Muffler Element .....	311A-312	32	Plug .....	311A-954
6	Muffler .....	311A-311	33	Valve Stem .....	311A-161
7	Rotor Fixing Plate .....	311A-118	34	O-ring .....	311A-65
8	Rear End Plate .....	311A-12	35	Spring .....	311A-51
9	Bearing Shield .....	311A-36	36	O-ring .....	311A-210
10	Rotor Bearing (2) .....	311A-24	37	Screw .....	311A-266
11	Cylinder .....	311A-3	38	Screw .....	311A-16
12	Shim (2) .....	311A-25	39	Balance Body .....	311A-236
13	Vane Packet (set of 5 Vanes) .....	311A-42-5	40	Spring Washer .....	311A-454
14	Rotor .....	311A-53	42	Screw .....	311A-101
15	Screw .....	311A-55	43	Wave Washer .....	311A-79
16	Spindle .....	311A-54	44	Bearing .....	311A-97
17	Front End Plate .....	311A-11	45	Mounting Shaft .....	311A-235
18	Handle .....	311A-A159	46	Wave Washer .....	311A-310
19	Nameplate .....	311A-301	47	Retaining Ring .....	311A-111
19A	Nameplate Rivet (2) .....	311A-256	48	Sanding Pad (6"/152 mm) .....	311A-825-6
20	Warning Label .....	WARNING-25-99	49	Washer .....	311A-839
21	Retaining Ring .....	311A-797	50	Drive Plate .....	311A-800
22	Regulator .....	311A-165	51	Balance Nut .....	311A-836
23	O-ring (2) .....	311A-65	52	Washer .....	311A-18
24	Lever .....	311A-273	53	Screw .....	311A-840
25	Lever Screw .....	311A-170	54	Washer (4) .....	311A-207
26	Nut .....	311A-117	55	Screw (4) .....	311A-103
27	Screw (2) .....	311A-638	56	Pin .....	311A-114
			57	Lever Bracket .....	311A-274