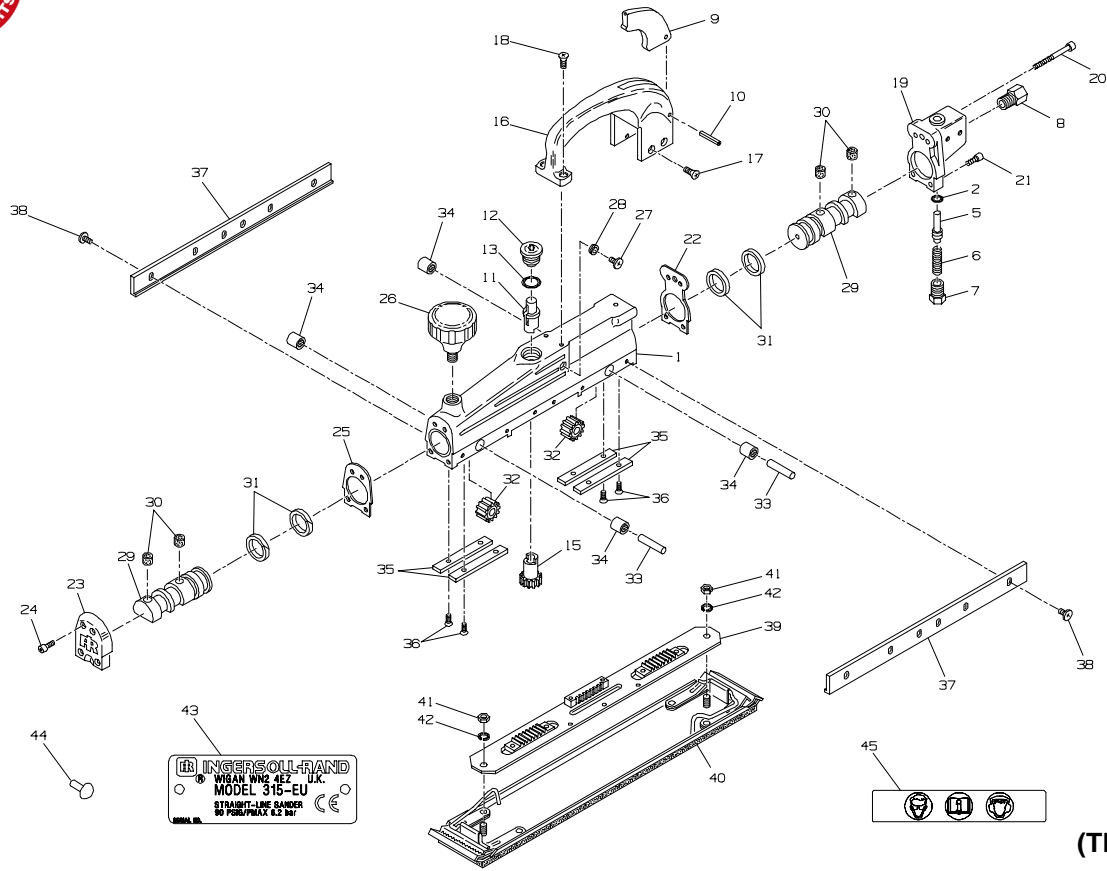




MODELS 315 AND 315-EU STRAIGHT LINE SANDERS



PART NUMBER FOR ORDERING

1	Housing Assembly (includes reverse valve bushing)	315-A40	27	Oiler Cavity Screw	315-328
2	Throttle Valve Seal	315-306	28	Oiler Cavity Washer	315-329
5	Throttle Valve	315-304	29	Piston Assembly (2)	315-A5
6	Throttle Valve Spring	315-305	30	Felt Piston Plug (2 for each piston)	315-7
7	Throttle Valve Spring Seat	315-103	31	Piston Seal Ring (2 for each piston)	315-6
8	Inlet Bushing	315-565	32	Piston Pinion Gear (2)	315-9
9	Throttle Lever	315-273	33	Piston Pinion Gear Shaft (2)	315-191
10	Throttle Lever Pin	315-274	34	Pinion Gear Shaft Bearing (4)	315-24
11	Reverse Valve	315-330	35	Wear Plate (4)	315-37
12	Reverse Valve Cap Assembly	315-A331	36	Wear Plate Screw (8)	315-324
13	Reverse Valve Cap O-ring	315-332	37	Guide Plate (2)	315-36
15	Reverse Valve Pinion	315-310	38	Guide Plate Screw (12)	315-327
16	Rear Handle	315-59	39	Drive Board (includes racks)	315-38
17	Rear Handle Screw (4) (short)	315-320	40	Sanding Pad Assembly	315-39
18	Rear Handle Screw (2) (long)	315-326	41	Sanding Pad Nut (2)	315-323
19	Backhead (includes throttle valve bushing)	315-A102	42	Sanding Pad Lock Washer (2)	315-441
20	Backhead Mounting Screw (2) (long)	315-325	43	Nameplate	
21	Backhead Mounting Screw (2) (short)	315-321		for 315	315-301
22	Backhead Gasket	315-740		for 315-EU	315-EU-301
23	Fronthead	315-240	44	Nameplate Drive Screw (2)	222-302
24	Fronthead Mounting Screw (4)	315-321	45	Warning Label	
25	Fronthead Gasket	315-739		for 315	WARNING-5-99
26	Front Handle	315-48		for 315-EU	EU-99

* Not illustrated.