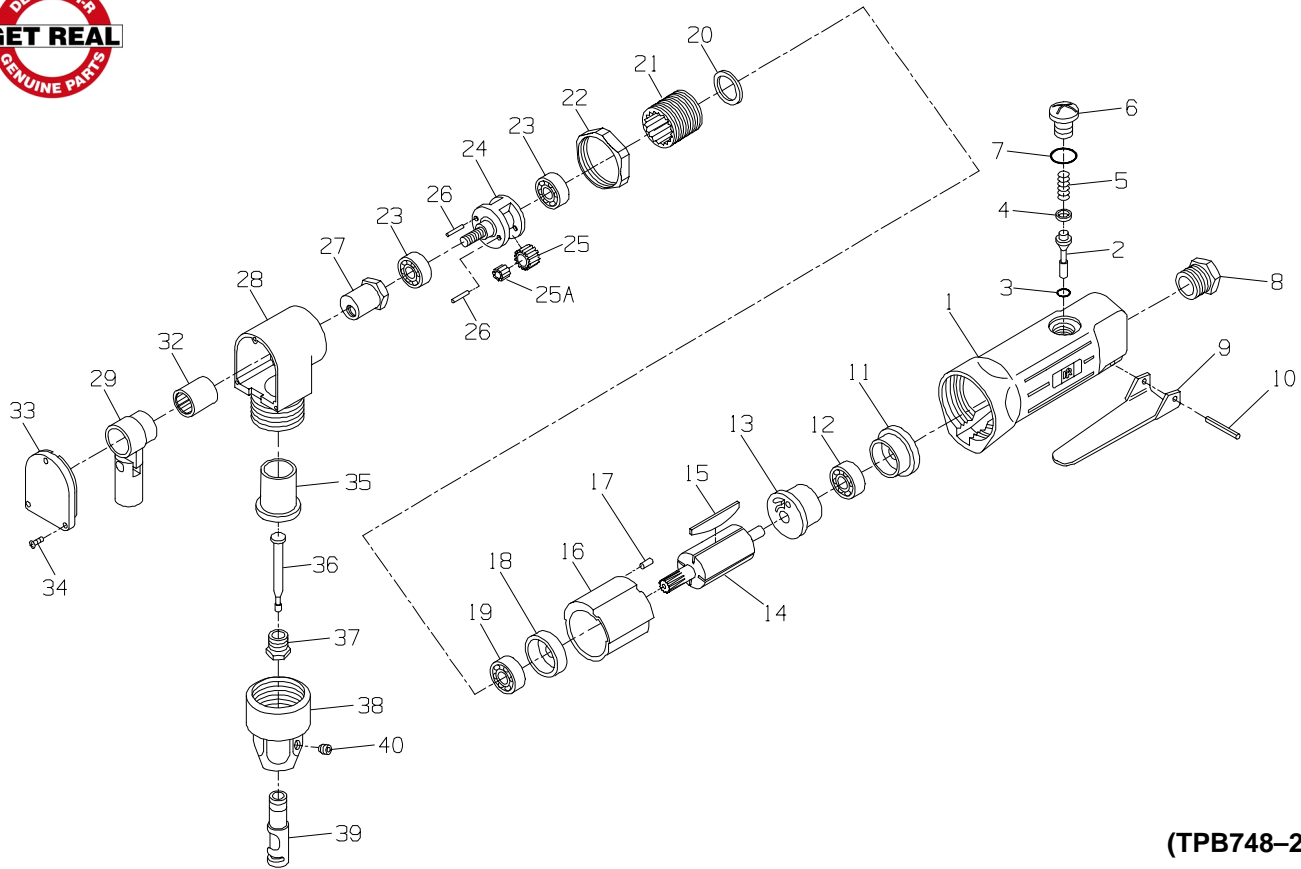




MODELS 325 AND 325-EU NIBBLERS



(TPB748-2)

PART NUMBER FOR ORDERING

1	Motor Housing Assembly (includes throttle valve bushing) for 325 107-A40 for 325-EU 107-EU-A40	22	Gear Case Nut	325-306
*	Warning Label for 325 222-99 for 325-EU EU-99	23	Spindle Bearing (2)	107-110
2	Throttle Valve Assembly 107-A302	24	Spindle	325-8
3	Throttle Valve Seal 107-314	25	Spindle Planet Gear (2)	107-9
4	Throttle Valve Spring Seat 107-710	25A	Needle Roller Package (2)	107-K21
5	Throttle Valve Spring 107-51	26	Spindle Planet Gear Shaft (2)	107-524
6	Throttle Valve Plug Assembly 107-A229A	27	Eccentric Nut	325-10
7	Throttle Valve Plug Seal 107-259	28	Nibbler Housing	325-25
8	Inlet Bushing 107-465	29	Nibbler Crank Assembly (includes Crankshaft and Crankshaft Pin)	325-A303
9	Throttle Lever 325-273	32	Crank Bearing	325-510
10	Throttle Lever Pin 107-120	33	Nibbler Housing Cover	325-316
11	End Plate Cap 107-624	34	Housing Cover Screw (3)	325-317
12	Rear Rotor Bearing 107-24	35	Crankshaft Bushing	325-318
13	Rear End Plate 107-12	36	Cutter	325-350
14	Rotor 107-53	37	Cutter Locknut	325-351
15	Vane Packet (set of 4 Vanes) 107-42-4	38	Nibbler Housing Nut	325-352
16	Cylinder Assembly 107-A3	39	Cutter Die	325-354
17	Cylinder Dowel 107-98	40	Cutter Die Setscrew	223-299
18	Front End Plate 107-11	*	Nameplate for 325 325-301 for 325-EU 325-EU-301	
19	Front Rotor Bearing 107-97	*	Nameplate Screw (2)	222-302
20	Motor Clamp Washer 107-18			
21	Gear Case 325-37			

* Not illustrated.