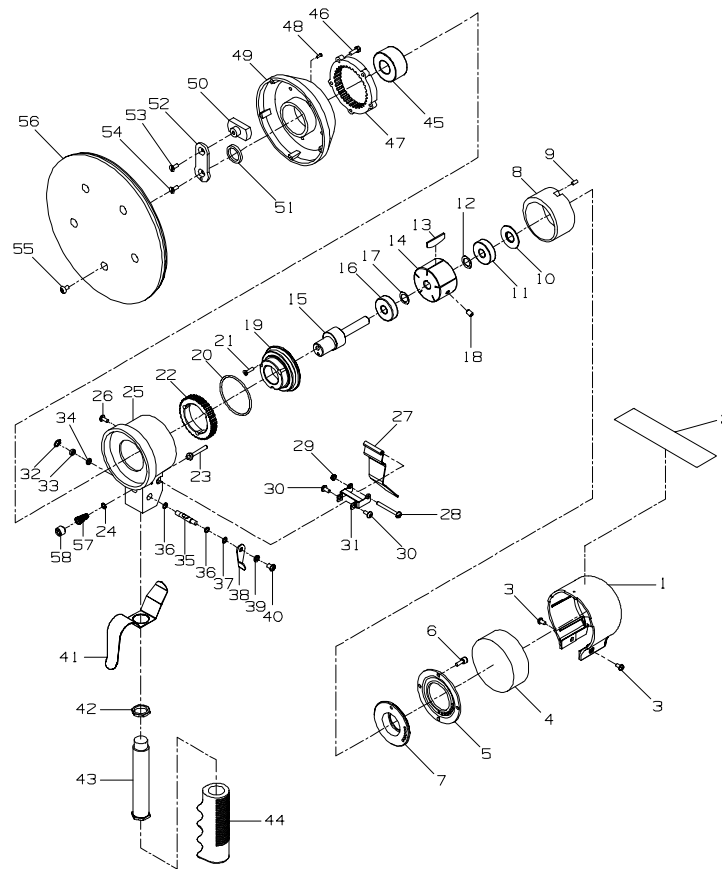




MODEL 328B GEARED ORBITAL SANDER



(TPA1772)

PART NUMBER FOR ORDERING

| | | | | | |
|----|------------------------------|-----------|----|----------------|------------|
| 1 | Housing Cover Assembly | 328B-A109 | 30 | Screw (2) | 311-170 |
| 2 | Nameplate | 328B-301 | 31 | Bracket | 311-274 |
| 3 | Screw (2) | 311-78 | 32 | Retainer Ring | 311-168 |
| 4 | Muffler | 311-311 | 33 | Washer | 311-166 |
| 5 | Motor Plate | 311-310 | 34 | Flat Washer | 311-167 |
| 6 | Motor Screw (4) | 311-103 | 35 | Regulator | 311-A165 |
| 7 | Front End Plate | 328B-11 | 36 | O-ring (2) | 311-169 |
| 8 | Cylinder Assembly | 311-A3 | 37 | O-ring | 311-65 |
| 9 | Pin | 311-98 | 38 | Regulator Nut | 311-270 |
| 10 | Washer | 311-25 | 39 | Washer | 311-277 |
| 11 | Bearing | 311-24 | 40 | Bolt | 311-279 |
| 12 | Shim | 311-448 | 41 | Second Lever | 311-271 |
| 13 | Vane Packet (set of 5 Vanes) | 311-42-5 | 42 | Nut | 311-155 |
| | Rotor Assembly | 328B-A53 | 43 | Handle | 311-A465 |
| 14 | Rotor | 311-53 | 44 | Grip | 311-160 |
| 15 | Rotor Shaft | 328B-54 | 45 | Bearing | 328B-97 |
| 16 | Bearing | 311-24 | 46 | Screw (5) | 328B-101 |
| 17 | Shim | 311-448 | 47 | Internal Gear | 328B-406 |
| 18 | Set Screw | 311-55 | 48 | Screw (3) | 311-279 |
| 19 | Rear End Plate Assembly | 328B-A12 | 49 | Gear Cover | 328B-236 |
| 20 | O-ring | 328B-68 | 50 | Balance Nut | 328B-836 |
| 21 | Screw (3) | 328B-104 | 51 | Balance Washer | 328B-18 |
| 22 | Gear | 328B-82 | 52 | Balance Shaft | 328B-316 |
| 23 | Valve Stem | 311-A161 | 53 | Screw | 328B-841 |
| 24 | O-ring | 311-169 | 54 | Screw | 328B-840 |
| 25 | Housing Assembly | 328B-A40 | 55 | Screw (5) | 328B-17 |
| 26 | Set Screw | 328B-55 | 56 | Pad (8") | 328B-825-8 |
| 27 | Lever | 311-273 | 57 | Spring | 311-51 |
| 28 | Screw | 311-275 | 58 | Screw | 311-266 |
| 29 | Nut | 311-278 | | | |