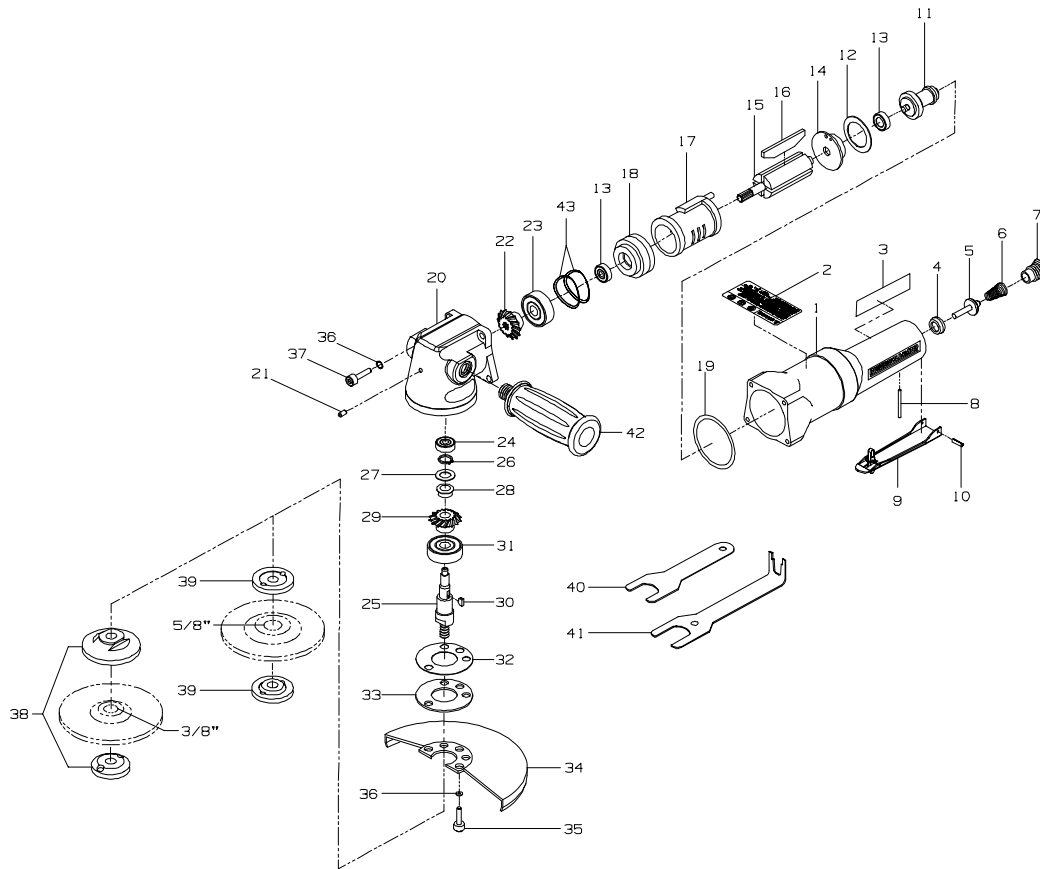




MODEL 344 ANGLE GRINDER



(TPA1672)

PART NUMBER FOR ORDERING

1	Motor Housing Assembly	344-A40	24	Ball Bearing	107-97
2	Warning Label	WARNING-24-99	25	Arbor	344-105
3	Nameplate	344-301A	26	Retaining Ring	344-729
4	Valve Seat	344-592	27	Wave Washer	344-29
5	Valve Stem	344-302	28	Gear Spacer	344-46
6	Valve Spring	344-51	29	Bevel Gear	344-552
7	Inlet Bushing	344-A465	30	Key	344-410
8	Throttle Pin	344-191	31	Ball Bearing	344-593
9	Throttle Lever Assembly	344-A400	32	Angle Housing Gasket	344-83
10	Throttle Lever Pin	344-120	33	Angle Housing Cover	344-532
11	Controller Assembly	344-A424	34	Wheel Guard	344-106-4
12	Motor Gasket	344-283	35	Guard Screw (4)	235-638
13	Ball Bearing (2)	107-24	36	Spring Washer (8)	223-58
14	Rear End Plate	344-12	37	Housing Cap Screw (4)	207-638
15	Rotor	344-53	38	ANSI Flange Assembly (for 3/8" diameter center hole)	344-A337
16	Vane Packet (set of 4 Vanes)	344-42-4	39	CE Flange Nut (2) (for 5/8" diameter center hole)	344-226
17	Cylinder Assembly	344-A3	40	Wrench	344-26
18	Front End Plate	344-11	41	Wrench	344-27
19	Motor Housing Gasket	344-383	42	Side Handle	313-48
20	Angle Housing	344-550	43	Wave Washer (2)	344-110
21	Grease Fitting	DOF9-879			
22	Pinion Gear	344-553			
23	Ball Bearing	317-22			