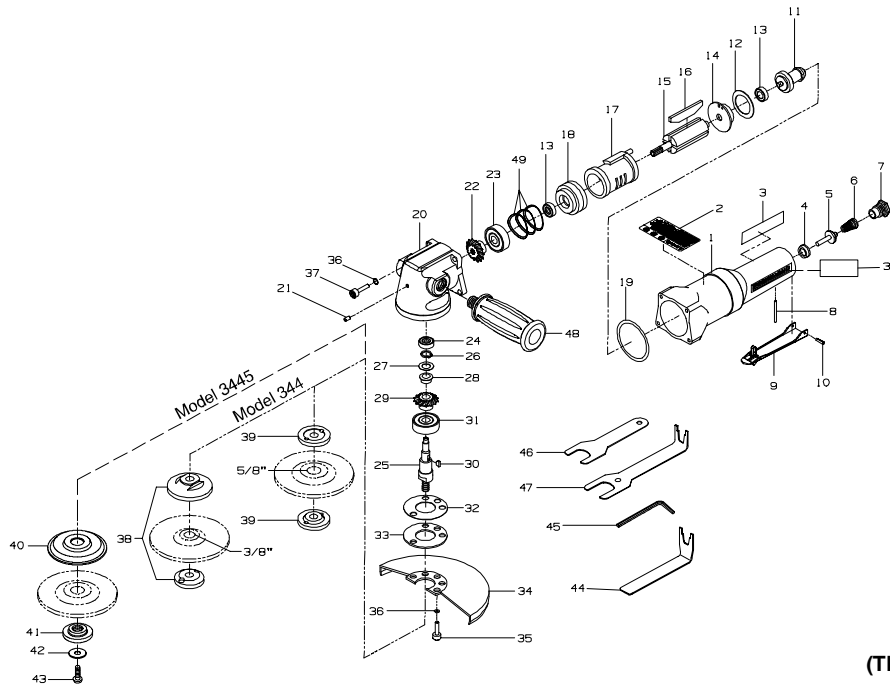


**MAINTENANCE INSTRUCTIONS**  
**SECTION D'ENTRETIEN**  
**WARTUNG**  
**SEZIONE DI MANUTENZIONE**  
**INSTRUCCIONES DE MANTENIMIENTO**  
**ONDERHOUD**



(TPA1672-1)



PART NUMBER FOR ORDERING  
 REFERENCE POUR COMMANDE DE LA PIECE  
 BESTELNUMMER  
 NUMERO DEL PEZZO PER L'ORDINAZIONE  
 SIMBOLO DE LA PIEZA PARA PEDIDOS  
 BESTELNUMMERS

1	Body Assembly for 344 .....	344-A40	23	Ball Bearing .....	317-22
	for 3445 .....	3445-A40	24	Ball Bearing .....	107-24
2	Warning Label .....	WARNING-24-99	25	Arbor for 344 .....	344-105
3	Tool Label for 344 .....	344-301A		for 3445 .....	3445-105
	for 3445 .....	3445-301A	26	Retaining Ring .....	344-729
3A	Name Label for 344 .....	344-301B	27	Wave Washer (2) .....	344-29
	for 3445 .....	3445-301B	28	Gear Spacer .....	344-46
4	Valve Seat .....	344-592	29	Bevel Gear for 344 .....	344-552
5	Valve Stem .....	344-302		for 3445 .....	3445-552
6	Valve Spring .....	344-51	30	Key .....	344-410
7	Inlet Bushing for 344 .....	344-51	31	Ball Bearing .....	344-593
	for 3445 .....	344-A465	32	Angle Housing Gasket (344 only) .	344-83
8	Throttle Pin .....	344-191	33	Angle Housing Cover .....	344-532
9	Throttle Lever Assembly .....	344-A400	34	Wheel Guard for 344 .....	344-106-4
10	Throttle Lever Pin .....	344-120		for 3445 .....	3445-106-45
11	Speed Controller Assembly for 344 .....	344-A424	35	Guard Screw (4) .....	235-638
	for 3445 .....	3445-A424	36	Spring Washer (8) .....	223-58
12	Motor Gasket .....	344-283	37	Housing Cap Screw (4) .....	207-638
13	Ball Bearing (2) .....	107-97	38	ANSI Flange Assembly .....	344-A337
14	Rear Endplate .....	344-12	39	CE Flange Nut (2) (for 5/8" diameter center hole .....	344-226
15	Rotor for 344 .....	344-53	40	Flange .....	AG230-337-5
	for 3445 .....	3445-53	41	Flange Nut .....	AG230-338-5
16	Vane Pack .....	344-42-4	42	Flange Nut Washer .....	LG2-218
17	Cylinder Assembly .....	344-A3	43	Lock Screw (JISB1174 Hex. blt) ...	LG2-219M
18	Front Endplate .....	344-11	44	Hex Wrench (for 3445) .....	3445-27
19	Body Gasket .....	344-383	45	Spanner Wrench (for 3445) .....	D32-26
20	Angle Housing Assembly .....	344-A550	46	Wrench A .....	344-26
21	Grease Fitting .....	D0F9-879	47	Wrench B (for 344) .....	344-27
22	Pinion Gear for 344 .....	344-553	48	Side Handle .....	313-48
	for 3445 .....	3445-553	49	Wave Washer (3) .....	344-110