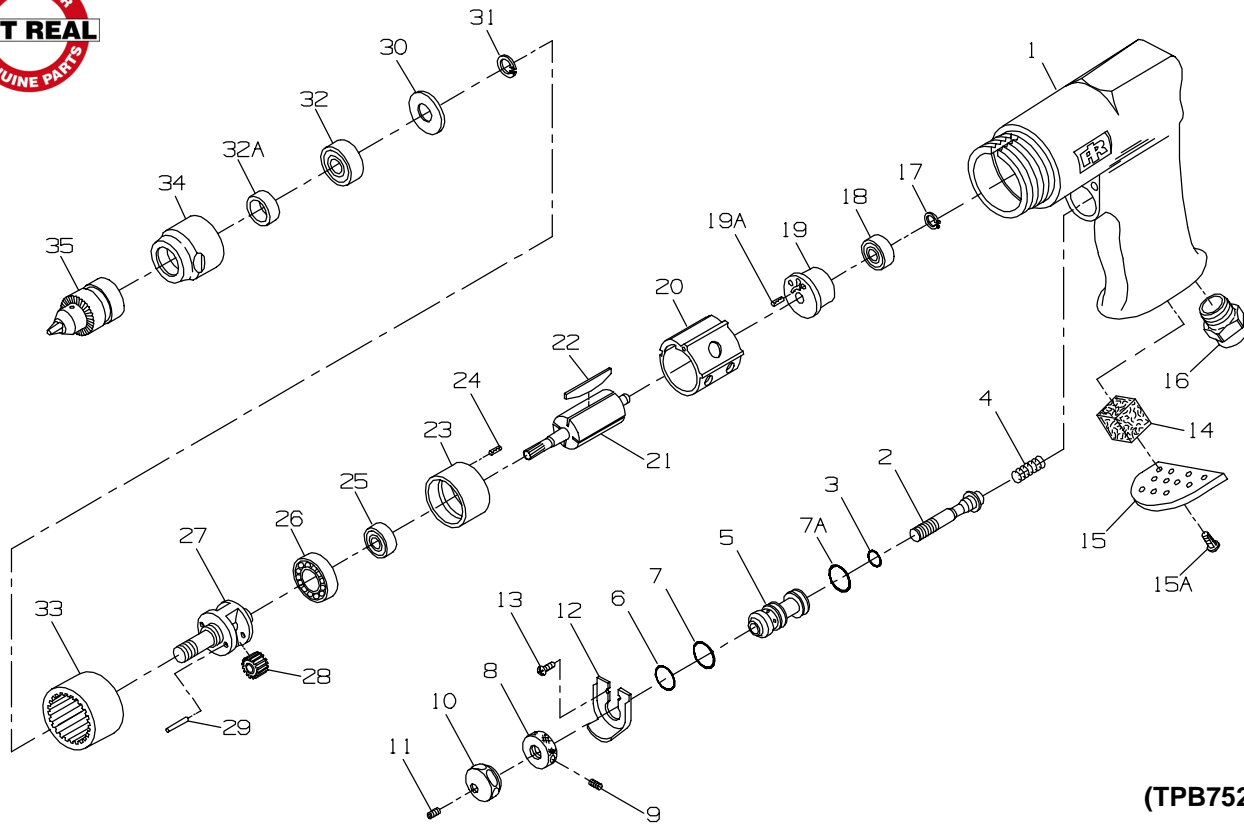




MODELS 7802 AND 7802-EU DRILLS



(TPB752-2)

PART NUMBER FOR ORDERING

1	Motor Housing	7802-40	20	Cylinder	109-3
*	Warning Label for model 7802	WARNING-7-99	21	Rotor	7802-53
	for model 7802-EU	EU-99	22	Vane (set/4)	7802-42-4
2	Throttle Valve Assembly	7802-A94	23	Front End Plate Assembly	7802-A11
3	Throttle Valve Seal	7802-159	24	End Plate Dowel	308-98
4	Throttle Valve Spring	7802-51	25	Front Rotor Bearing	107-97
5	Throttle Valve Bushing Assembly	7802-A91	26	Rear Spindle Bearing	7802-509
6	Valve Bushing Seal	7802-290	27	Spindle	7802-8
7	Valve Bushing Seal	7802-291	+ 28	Spindle Planet Gear (2)	7802-10
7A	Valve Bushing Seal	7802-291	29	Planet Gear Shaft (2)	7802-191
8	Speed Regulator	7802-249	30	Grease Shield	7802-701
9	Regulator Setscrew	7802-67	31	Grease Shield Retainer	7802-28
10	Trigger	7802-93	32	Front Spindle Bearing Package	7802-K510
11	Trigger Setscrew	7802-68	32A	Chuck Spacer	7802-90
12	Trigger Shield	7802-300	33	Ring Gear	7802-406
13	Trigger Shield Screw (2)	7802-299	34	Gear Case Housing	7802-27
14	Muffler Element	7802-311	35	Chuck (3/8" capacity)	7802-99
15	Exhaust Silencer	7802-23	*	Housing Boot	7802-P32
15A	Exhaust Silencer Screw (2)	7802-262	*	Chuck Key	R000B2J70-J253
16	Inlet Bushing	7802-465	*	Nameplate for model 7802	7802-301
17	Rear Rotor Bearing Retainer	7802-118		for model 7802-EU	7802-EU-301
18	Rear Rotor Bearing	107-24	*	Nameplate Screw (2)	222-302
19	Rear End Plate Assembly	7802-A12			
19A	End Plate Dowel	308-98			

* Not illustrated.

+ When replacing the Spindle Planet Gears, you must order a Planet Gear Bearing Kit No. **7802-K10**. The Planet Gear Bearing Kit includes 22 needle rollers and four retaining washers, enough for two gears. Also, replace Planet Gear Shafts (29) if worn.

NOTICE

Do not mix used gears with new needle rollers or new gears with used needle rollers.