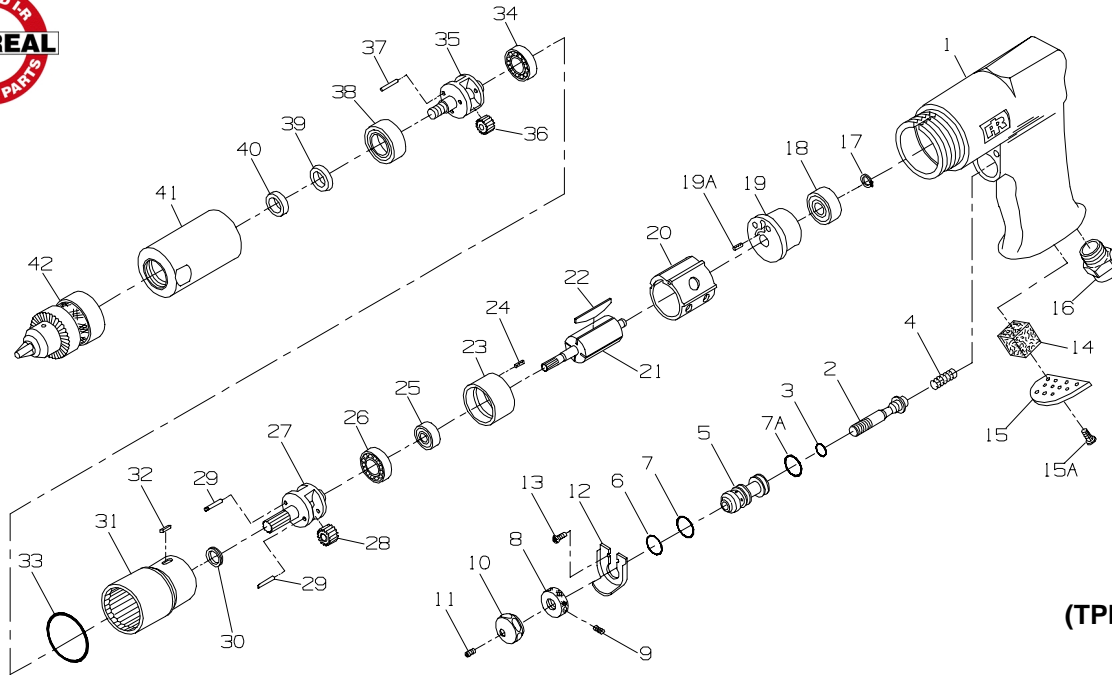




## MODELS 7803 AND 7803-EU DRILLS



(TPB753-2)

### PART NUMBER FOR ORDERING

1	Motor Housing for 7803 .....	7802-40	23	Front End Plate Assembly .....	7802-A11
	for 7803-EU .....	7802-EU-40	24	End Plate Dowel .....	308-98
*	Warning Label for 7803 .....	WARNING-7-99	25	Front Rotor Bearing .....	107-97
	for 7803-EU .....	EU-99	26	Gear Head Bearing .....	7802-509
2	Throttle Valve Assembly .....	7802-A94	27	Gear Head .....	7803-216
3	Throttle Valve Seal .....	308-159	+28	Gear Head Planet Gear (2) .....	7803-10
4	Throttle Valve Spring .....	7802-51	29	Gear Head Planet Gear Shaft (2) .....	7803-191
5	Throttle Valve Bushing Assembly .....	7802-A91	30	Gear Shaft Retainer .....	7803-118
6	Valve Bushing Seal .....	7802-290	31	Ring Gear .....	7803-406
7	Valve Bushing Seal .....	7802-291	32	Ring Gear Key .....	7803-98
7A	Valve Bushing Seal .....	7802-291	33	Ring Gear Seal .....	7803-283
8	Speed Regulator .....	7802-249	34	Rear Spindle Bearing .....	7803-509
9	Regulator Setscrew .....	7802-67	35	Spindle .....	7803-8
10	Trigger .....	7802-93	+36	Spindle Planet Gear (3) .....	7803-10
11	Trigger Setscrew .....	7802-68	37	Spindle Planet Gear Shaft (3) .....	7803-190
12	Trigger Shield .....	7802-300	38	Front Spindle Bearing .....	7803-510
13	Trigger Shield Screw (2) .....	7802-299	39	Spindle Seal .....	7803-701
14	Muffler Element .....	7802-311	40	Spindle Seal Support .....	7803-5
15	Exhaust Silencer .....	7802-23	41	Gear Case Housing .....	7803-27
15A	Exhaust Silencer Screw .....	7802-262	42	Chuck (1/2" capacity) .....	7803-99
16	Inlet Bushing .....	7802-465	*	Chuck Key .....	7803-253
17	Rear Rotor Bearing Retainer .....	7802-118	*	Nameplate for 7803 .....	7803-301
18	Rear Rotor Bearing .....	107-24		for 7803-EU .....	7803-EU-301
19	Rear End Plate Assembly .....	7802-A12	*	Nameplate Screw (2) .....	222-302
19A	End Plate Dowel .....	308-98	*	Dead Handle .....	7803-48
20	Cylinder .....	7802-3	*	Dead Handle Ring .....	7803-49
21	Rotor .....	7802-53	*	Tune-up Kit (includes illustrated items 3, 4, 6, 7, 7A, 14, 17, 22, 33 and 39) .....	7803-TK1
22	Vane Packet (set of 4 Vanes) .....	7802-42-4			

\* Not illustrated.

+ When replacing the Gear Head Planet Gears (28) and/or the Spindle Planet Gears (36) you must order a Planet Gear Bearing Kit No. 7803-K10. The Planet Gear Bearing Kit includes 45 needle rollers and ten retaining washers, enough for five gears. Also replace Planet Gear Shafts (29) and (37) if worn. **IMPORTANT:** Do not mix used gears with new needle rollers or new gears with used needle rollers.

### NOTICE

**Do not mix used gears with new needle rollers or new gears with used needle rollers.**