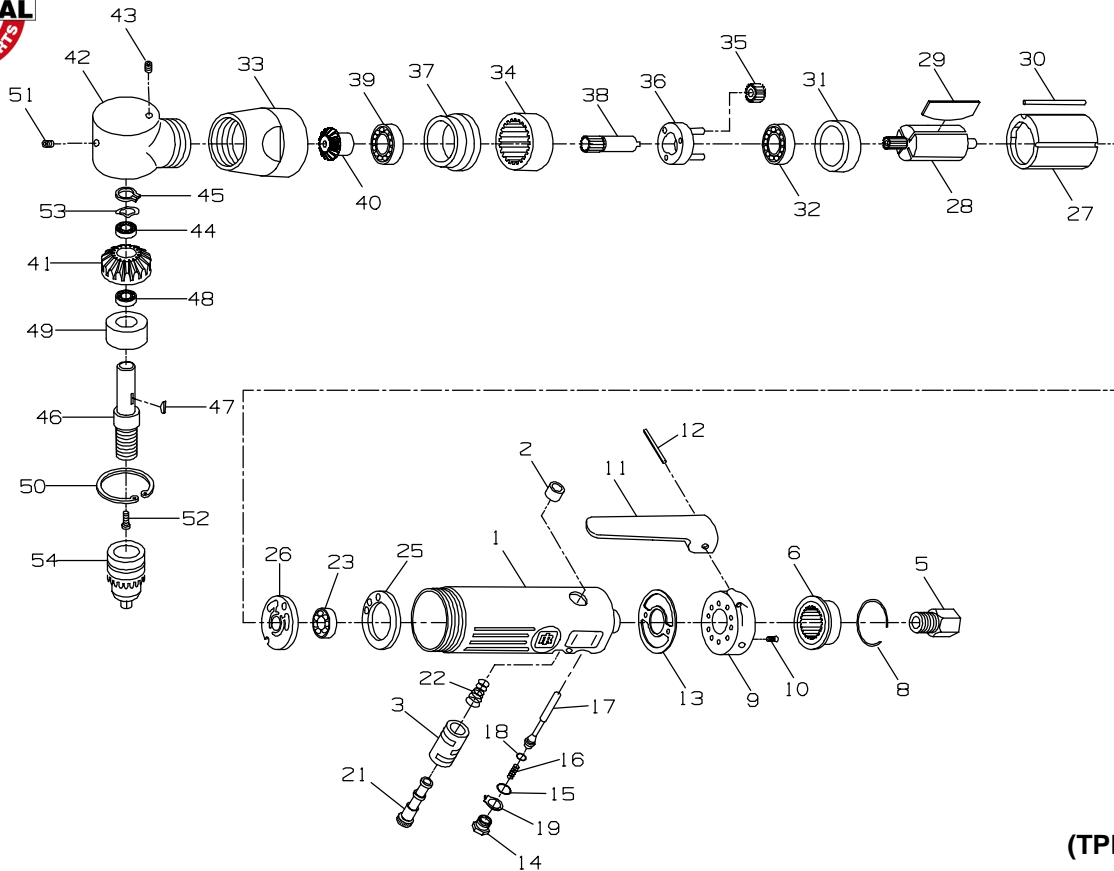




MODELS 7807R AND 7807R-EU ANGLE DRILLS



(TPB1006-4)

PART NUMBER FOR ORDERING

1	Motor Housing	LA411-40	34	Ring Gear	LA411-36
2	Valve Bushing	LA411-93	35	Planet Gear (3)	LA411-10
3	Reverse Valve Bushing	LA411-330	36	Gear Head	LA411-216
5	Inlet Bushing	LA411-565	37	Bearing Cage	LA411-70
6	Deflector	LA411-23	38	Spindle Shaft	LA411-41
8	Deflector Stop Ring	LA411-28	39	Spindle Bearing	LA411-66
9	Housing Cap	LA411-7	40	Pinion	LA411-551
10	Screw (2)	LA411-8	41	Bevel Pinion Gear	LA411-552
11	Throttle Lever	LA411-273	42	Angle Housing	LA411-550
12	Throttle Lever Pin	LA411-120	43	Grease Fitting	LA411-879
13	Housing Gasket	LA411-739	44	Spindle Upper Bearing	LA411-603
14	Valve Screw	LA411-60	45	Bevel Pinion Gear Retainer	LA411-531
15	Valve Screw O-ring	LA411-379	46	Spindle	LA411-591
16	Throttle Valve Spring	LA411-51	47	Bevel Pinion Gear Key	LA411-49
17	Throttle Valve	LA411-302	48	Lower Spindle Bearing	LA411-593
18	Throttle Valve O-ring	LA411-16	49	Lower Spindle Bearing Cage	LA411-65
19	Reverse Retainer	LA411-20	50	Spindle Retainer	LA411-853
21	Reverse Valve	LA411-329	51	Angle Housing Set Screw	LA411-54
22	Reverse Valve Spring	LA411-515	52	Chuck Screw	LA411-55
23	Rear Rotor Bearing	LA411-24	53	Upper Bearing Wave Washer	LA411-57
25	Motor Gasket	LA411-27	54	Drill Chuck (3/8")	LA411-99
26	Rear End Plate	LA411-12	*	Nameplate	
27	Cylinder	LA411-3		for 7807R	7807R-301
28	Rotor	LA411-53		for 7807R-EU	7807R-EU-301
29	Vane (5)	LA411-42	*	Chuck Key	LA411-253
30	Cylinder Dowel	LA411-98	*	Warning Label	
31	Front End Plate	LA411-11		for 7807R	WARNING-7-99
32	Front Rotor Bearing	LA411-34		for 7807R-EU	EU-99
33	Gear Case	LA411-37			

* Not illustrated.