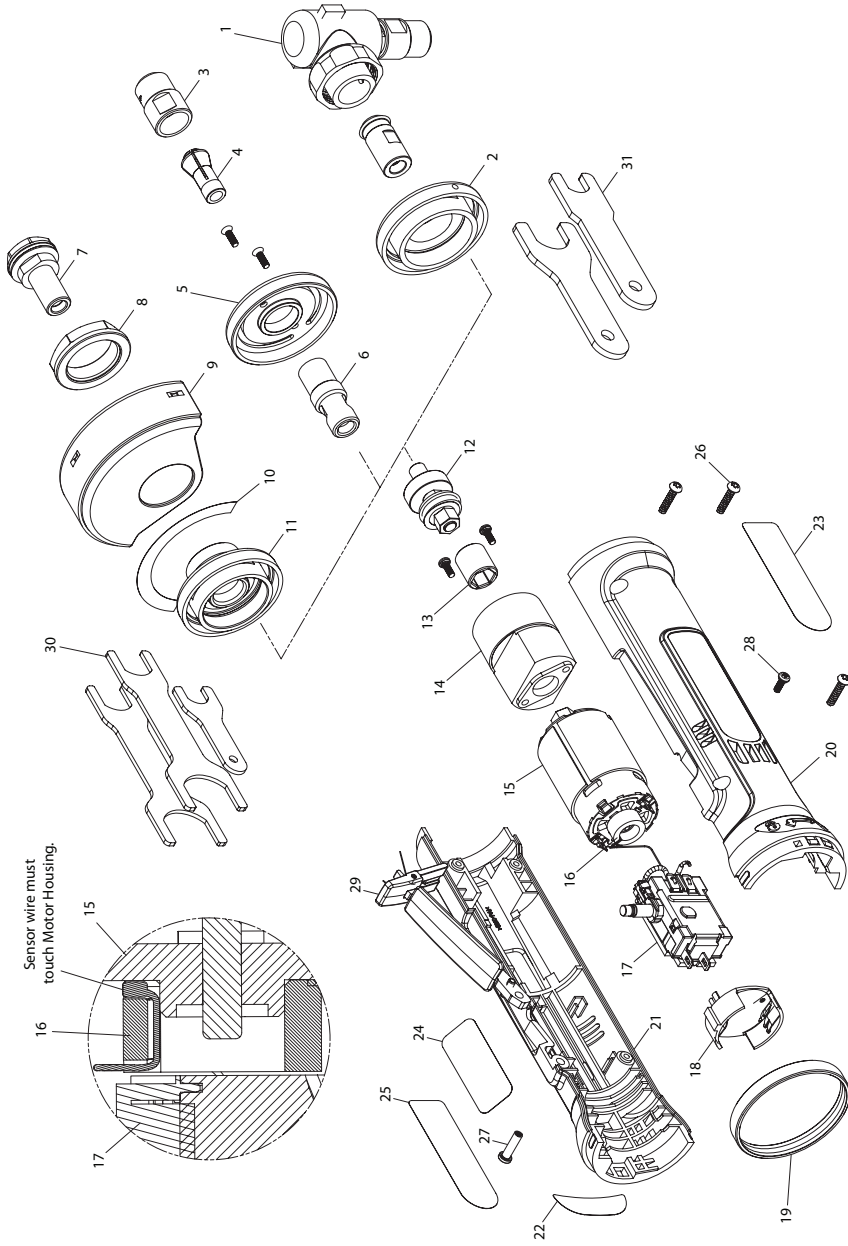


GS25, GR25 Cordless Die Grinder and GC25 Abrasive Cut-off Tool Exploded Diagram



(Dwg. 45504446)

GS25, GR25 Cordless Die Grinder and GC25 Abrasive Cut-off Tool Parts List

Item	Part Description	Part Number	Item	Part Description	Part Number
For GR25 Angle Die Grinder			16	Sensor Sleeve	GS25-K930
1	Angle Head Assembly (Includes both gears)	GR25-K550	17	Switch	GS25-K93
2	Angle Head Adapter	GR25-K588	18	Battery Connector	R380-K56
For GS25 Straight Die Grinder			19	Housing Ring	W040-K339
3	Collet Nut	301-699		Housing Kit	---
4	Collet	301-700		for GS25 Straight Die Grinder	GS25-K40
5	Die Cap Kit (Includes screws)	GS25-K531		for GR25 Angle Die Grinder	GR25-K40
6	Collet Body	307A-214		for GC25 Abrasive Cut-Off Tool	GC25-K40
For GC25 Abrasive Cut-Off Tool			20	Right Housing	---
7	Arbor Kit	GC25-K4	21	Left Housing	---
	Guard Kit	GC25-K106-3B	22	Voltage Label	---
8	Clamp Nut	---	23	Nameplate	---
9	Guard	---	24	Warning Label	---
10	Warning Label	---	25	Information Label	---
11	Guard Mount	---	26	Screw, Grip (3 per kit)	---
For all Tools			27	Barrel Nut	---
12	Bearing Assembly	GS25-K299	28	Coupling Screw	---
	Front Bearing	---		Lever	---
	Rear Bearing	---	29	Fastener Kit (includes all threaded fasteners)	GS25-K105
	Hex Drive	---		Lever Kit (Includes parts 27,28)	GR25-K400
	Drive Shaft	---		Label Kit	---
	O-Ring	---		for GS25 Straight Die Grinder	GS25-K99
Wave Spring	---	for GR25 Angle Die Grinder	GR25-K99		
13	Coupling	GS25-K304		for GC25 Abrasive Cut-Off Tool	GC25-K99
14	Motor Mount	---		Wrench Kit	---
	for GS25 (Includes screws)	GS25-K340	30	for GC25	GC25-K69
	for GR25 and GC25 (Includes screws)	GR25-K340	31	for GR25 and GS25	301-69
15	Electric Motor Kit (Includes screws)	GS25-K54	Not Included with tool:		
	Motor	---		14.4V Li-Ion Battery Pack	BL144
	Hex Drive	---		14.4V Ni-Cd Battery Pack	N144
	Wire, Positive	---		Battery Charger	BC10
	Wire, Negative	---			

Parts and Maintenance

When the life of the tool has expired, it is recommended that the tool be disassembled, degreased and parts be separated by material so that they can be recycled.

Tool repair and maintenance should only be carried out by an authorized Service Center.

Refer all communications to the nearest **Ingersoll Rand** Office or Distributor.

Related Documentation

For additional information refer to:

Product Safety Information Manual 45502192 and 45526704.

Product Information Manual 45502200 and 45526811.

Manuals can be downloaded from www.irtools.com.



www.irtools.com

© 2007 **Ingersoll Rand** Company

45502218

Edition 4

May 2007